

RWDD1 antibody

Catalog Number: 114941

Product name

RWDD1 antibody

Specificity

Human, Mouse, Rat; other species not tested.

Antibody description

RWDD1 Rabbit Polyclonal antibody. Positive WB detected in Jurkat cells, HeLa cells, human skeletal muscle tissue, mouse thymus tissue. Positive IP detected in mouse thymus tissue. Observed molecular weight by Western-blot: 28 kDa

Preparation

This antibody was obtained by immunization of RWDD1 recombinant protein (Accession Number: NM_015952). Purification method: Antigen affinity purified.

Formulation

PBS with 0.02% sodium azide and 50% glycerol pH 7.3.

Storage

Store at -20°C. DO NOT ALIQUOT

Clonality

Polyclonal

Ig Type

Rabbit IgG

Applications

ELISA, WB, IP

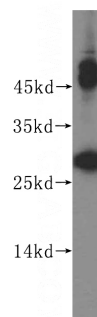
Dilutions

Recommended Dilution:

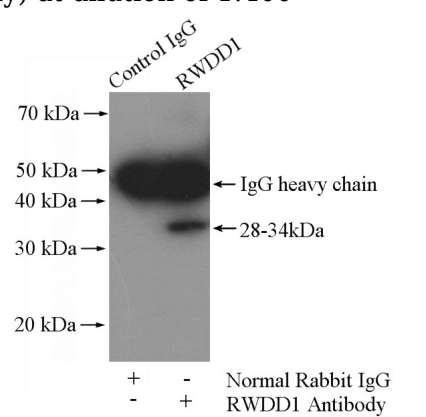
WB: 1:500-1:5000

IP: 1:200-1:1000

Validations



Jurkat cells were subjected to SDS PAGE followed by western blot with Catalog No:114941(RWDD1 antibody) at dilution of 1:400



IP Result of anti-RWDD1 (IP:Catalog No:114941, 4ug; Detection:Catalog No:114941 1:300) with mouse thymus tissue lysate 2800ug.