

# ENTPD2 Polyclonal Antibody



Catalog Number: 164941

---

## Product name

ENTPD2 Polyclonal Antibody

## Specificity

Human

## Antibody description

Polyclonal antibody to ENTPD2

## Preparation

Antigen: Recombinant fusion protein containing a sequence corresponding to amino acids 28-268 of human ENTPD2 (NP\_982293.1).

## Formulation

PBS with 0.02% sodium azide, 50% glycerol, pH7.3.

## Storage

Store at -20°C. Avoid freeze / thaw cycles.

## Clonality

Polyclonal

## Ig Type

Rabbit IgG

## Applications

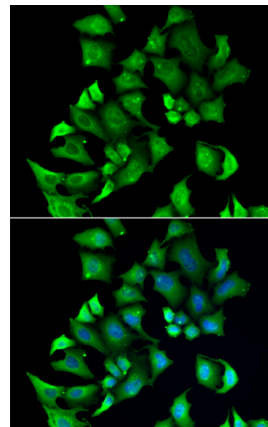
WB, IF

## Dilutions

WB 1:500 - 1:2000

IF 1:50 - 1:100

## Validations



Immunofluorescence - ENTPD2 Polyclonal Antibody

Immunofluorescence analysis of A549 cells using ENTPD2 antibody . Blue: DAPI for nuclear staining.