

Anti-MESDC2 antibody



Catalog Number: 103941

Product name

Anti-MESDC2 antibody

Immunogen

[Human MESDC2 \(His Tag\) recombinant protein](#)

Specificity

Human MESDC2

Antibody description

Rabbit monoclonal to MESDC2

Preparation

This antibody was obtained from a rabbit immunized with purified, recombinant Human MESDC2 (rh MESDC2; NP_055969.1; Ala 34-Lys 230).

Formulation

0.2 μm filtered solution in PBS with 5% trehalose

Storage

This antibody can be stored at 2°C-8°C for one month without detectable loss of activity. Antibody products are stable for twelve months from date of receipt when stored at -20°C to -80°C.

Preservative-Free.

Sodium azide is recommended to avoid contamination (final concentration 0.05%-0.1%). It is toxic to cells and should be disposed of properly. Avoid repeated freeze-thaw cycles.

Clonality

Monoclonal

Ig Type

Rabbit IgG

Applications

ELISA, WB, IP

Dilutions

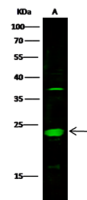
WB: 2-10 $\mu\text{g}/\text{mL}$

ELISA: 0.1-0.2 $\mu\text{g}/\text{mL}$

This antibody can be used at 0.1-0.2 $\mu\text{g}/\text{mL}$ with the appropriate secondary reagents to detect Human MESDC2. The detection limit for Human MESDC2 is approximately 0.00975 ng/well.

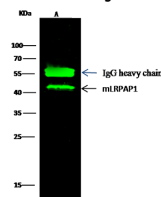
IP: 1-4 $\mu\text{g}/\text{mg}$ of lysate

Validations



Items	Lanes	A
Sample (whole cell lysate)		HEK293
Sample Volume ($\mu\text{g}/\text{lane}$)		60
Gel		13% SDS-PAGE reducing gel
Recommended Concentration		2-10 $\mu\text{g}/\text{ml}$
Secondary Antibody		Dylight 800-labeled Antibody To Rabbit IgG (H+L), at 1:5000 dilution.

MESDC2 Antibody, Rabbit MAb, Western blot



Items	Lanes	A
Sample (whole cell lysate)		A549
Sample quantity		0.5 mg
IP antibody quantity		2 μg
Protein G agarose		15 μl of 50% Protein G Agarose
Gel		13% SDS-PAGE reducing gel
Primary antibody		mLRPAP1 antibody at 10 $\mu\text{g}/\text{ml}$ [Cat# 50281-8009]
Secondary antibody		Dylight 800-labeled antibody to rabbit IgG (H+L), at 1:5000 dilution.

MESDC2 Antibody, Rabbit MAb, Immunoprecipitation