

SETD5 Polyclonal Antibody



Catalog Number: 161941

Product name

SETD5 Polyclonal Antibody

Specificity

Human

Antibody description

Polyclonal antibody to SETD5

Preparation

Antigen: Recombinant fusion protein containing a sequence corresponding to amino acids 520-740 of human SETD5 (NP_001073986.1).

Formulation

PBS with 0.02% sodium azide, 50% glycerol, pH7.3.

Storage

Store at -20°C. Avoid freeze / thaw cycles.

Clonality

Polyclonal

Ig Type

Rabbit IgG

Applications

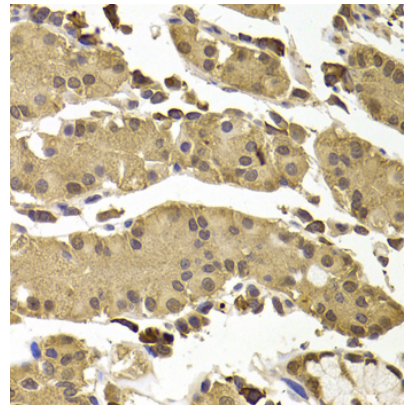
IHC, IF

Dilutions

IHC 1:50 - 1:200

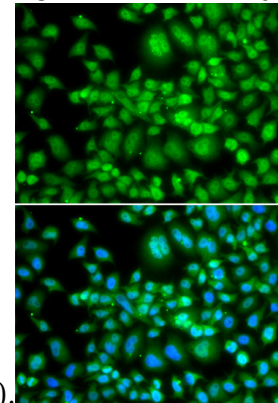
IF 1:50 - 1:200

Validations



Immunohistochemistry - SETD5 Polyclonal Antibody

Immunohistochemistry of paraffin-embedded human stomach using SETD5 antibody at dilution



of 1:100 (40x lens).

Immunofluorescence - SETD5 Polyclonal Antibody

Immunofluorescence analysis of MCF-7 cells using SETD5 antibody . Blue: DAPI for nuclear staining.