

GEMIN8 antibody



Catalog Number: 110941

Product name

GEMIN8 antibody

IP: 1:200-1:1000

IHC: 1:20-1:200

Specificity

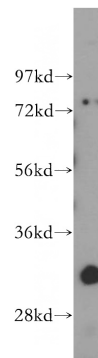
Human; other species not tested.

IF: 1:20-1:200

Antibody description

GEMIN8 Rabbit Polyclonal antibody. Positive WB detected in HepG2 cells, HEK-293 cells. Positive IP detected in HepG2 cells. Positive IF detected in HepG2 cells. Positive IHC detected in human liver cancer tissue. Observed molecular weight by Western-blot: 32 kDa

Validations



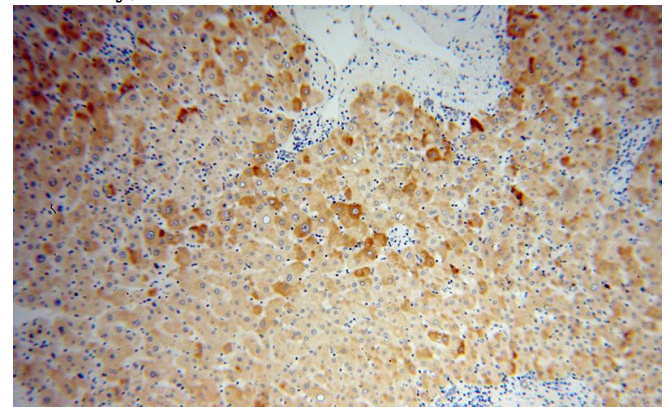
Preparation

This antibody was obtained by immunization of GEMIN8 recombinant protein (Accession Number: XM_017029617). Purification method: Antigen affinity purified.

HepG2 cells were subjected to SDS PAGE followed by western blot with Catalog No:110941(GEMIN8 antibody) at dilution of 1:400

Formulation

PBS with 0.02% sodium azide and 50% glycerol pH 7.3.



Storage

Store at -20°C. DO NOT ALIQUOT

Clonality

Polyclonal

Ig Type

Rabbit IgG

Applications

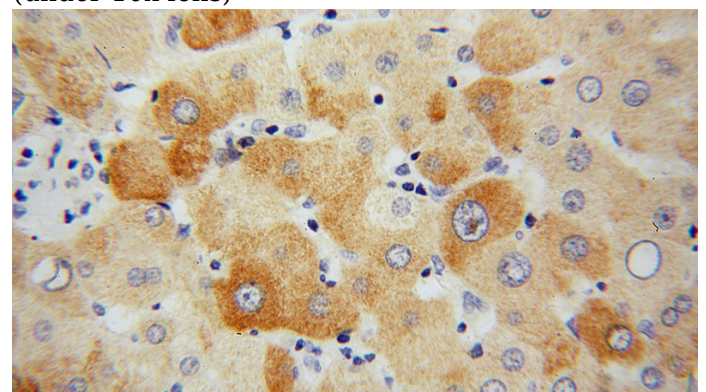
ELISA, WB, IHC, IP, IF

Dilutions

Recommended Dilution:

WB: 1:200-1:2000

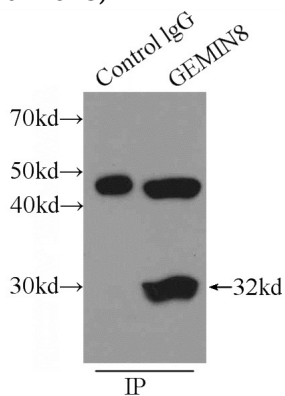
Immunohistochemical of paraffin-embedded human liver cancer using Catalog No:110941(GEMIN8 antibody) at dilution of 1:50 (under 10x lens)



GEMIN8 antibody

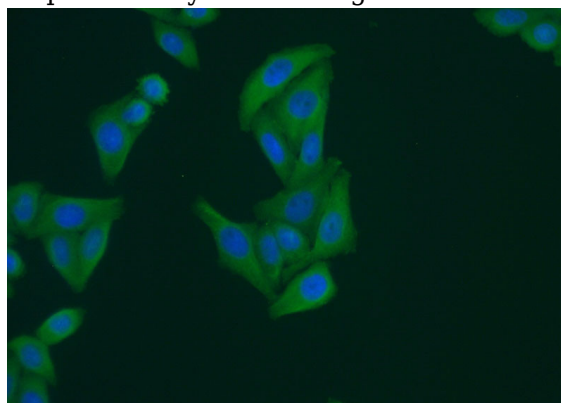
Catalog Number: 110941

Immunohistochemical of paraffin-embedded human liver cancer using Catalog No:110941(GEMIN8 antibody) at dilution of 1:50 (under 40x lens)



IP Result of anti-GEMIN8 (IP:Catalog No:110941, 3ug; Detection:Catalog No:110941 1:400) with

HepG2 cells lysate 1720ug.



Immunofluorescent analysis of (-20oc Ethanol) fixed HepG2 cells using Catalog No:110941(GEMIN8 Antibody) at dilution of 1:50 and Alexa Fluor 488-conjugated AffiniPure Goat Anti-Rabbit IgG(H+L)