

# Anti-Phospho-Tau (Ser202/Thr205) Rabbit antibody



Catalog Number: 167541

## Product name

Polyclonal

Anti-Phospho-Tau (Ser202/Thr205) Rabbit antibody

## Ig Type

Rabbit IgG

## Specificity

Human

## Applications

WB, IP

## Antibody description

Phospho-Tau (Ser202/Thr205) Rabbit polyclonal antibody

## Dilutions

WB: 1/1000

IP: 1/20

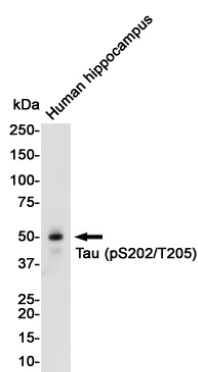
## Preparation

Antigen: A synthetic phosphopeptide corresponding to residues surrounding Ser202/Thr205 of human Tau

## Validations

## Formulation

Supplied in 50nM Tris-Glycine(pH 7.4), 0.15M NaCl, 40%Glycerol, 0.01% sodium azide and 0.05% BSA.



## Storage

Store at -20°C. Stable for 12 months from date of receipt.

Western blot detection of Tau (Phospho-Ser202/Thr205) in Human Fetal brain cell lysates using Tau (Phospho-Ser202/Thr205) Rabbit pAb(1:1000 diluted). Predicted band size: 79KDa. Observed band size: 50-80KDa.

## Clonality