

Phospho-EEF2K-S366 pAb



Catalog Number: 166541

Product name

Phospho-EEF2K-S366 pAb

Specificity

Human, Mouse, Rat

Antibody description

Polyclonal antibody to Phospho-EEF2K-S366

Preparation

Antigen: A synthetic phosphorylated peptide around S366 of human EEF2K (NP_037434.1).

Formulation

PBS with 0.02% sodium azide, 50% glycerol, pH7.3.

Storage

Store at -20°C. Avoid freeze / thaw cycles.

Clonality

Polyclonal

Ig Type

Rabbit IgG

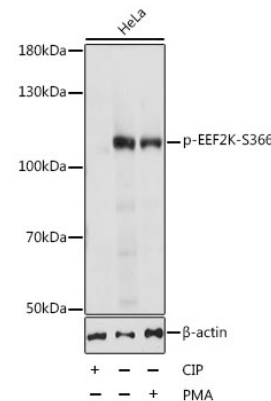
Applications

WB

Dilutions

WB 1:500 - 1:2000

Validations



Western blot - Phospho-EEF2K-S366 pAb

Western blot analysis of extracts of HeLa cells, using Phospho-EEF2K-S366 antibody at 1:1000 dilution. HeLa cell lysate were treated by CIP (20ul CIP for each 400ul cell lysate) at 37u2103 for 1 hour or treated by PMA/TPA (200nM) for 15 minutes after serum-starvation overnight. Secondary antibody: HRP Goat Anti-Rabbit IgG (H+L) at 1:10000 dilution. Lysates/proteins: 25ug per lane. Blocking buffer: 3% BSA. Detection: ECL Basic Kit. Exposure time: 15s.