

# Anti-PKM2 Rabbit antibody



Catalog Number: 167141

## Product name

Anti-PKM2 Rabbit antibody

## Specificity

Human

## Antibody description

PKM2 Rabbit polyclonal antibody

## Preparation

Antigen: Peptide sequence around aa. 36~40(D-S-P-P-I) derived from Human PKM1/2.

## Formulation

Supplied at 1.0mg/mL in phosphate buffered saline (without Mg<sup>2+</sup> and Ca<sup>2+</sup>), pH 7.4, 150mM NaCl, 0.02% sodium azide and 50% glycerol.

## Storage

Store at 4°C short term. Store at -20°C long term. Avoid freeze / thaw cycle.

## Clonality

Polyclonal

## Ig Type

Rabbit IgG

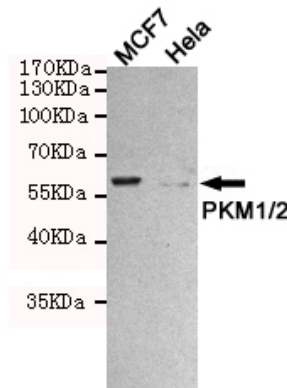
## Applications

WB

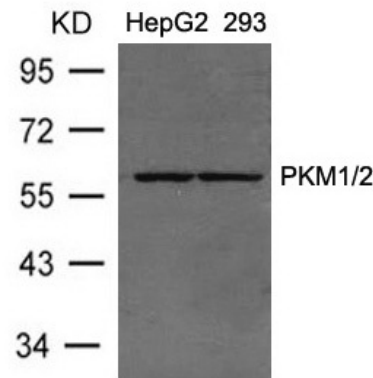
## Dilutions

WB:1/500

## Validations



Western blot detection of PKM1/2 in MCF7 cell lysates which is positive expression and in HeLa cell lysates which is negative expression using PKM1/2 rabbit pAb (1:1000 diluted). Predicted band size:60KDa. Observed band size:60KDa.



Western blot analysis of extracts from HepG2 and 293 cells using PKM1/2 rabbit pAb (1:500 diluted). Predicted band size:60KDa. Observed band size:60KDa.