

# PPOX antibody

Catalog Number: 114141

## Product name

PPOX antibody

WB: 1:200-1:2000

IHC: 1:20-1:200

## Immunogen

[Human PPOX Recombinant protein \(His tag\)](#)

## Specificity

human, mouse, rat; other species not tested.

## Antibody description

PPOX Rabbit Polyclonal antibody. Positive IHC detected in human kidney. Positive WB detected in human placenta tissue. Observed molecular weight by Western-blot: 51kd

## Preparation

This antibody was obtained by immunization of PPOX recombinant protein (Accession Number: NM\_000309). Purification method: Antigen affinity purified.

## Formulation

PBS with 0.02% sodium azide and 50% glycerol pH 7.3.

## Storage

Store at -20°C. DO NOT ALIQUOT

## Clonality

Polyclonal

## Ig Type

Rabbit IgG

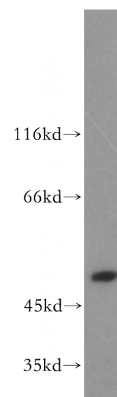
## Applications

ELISA, WB, IHC

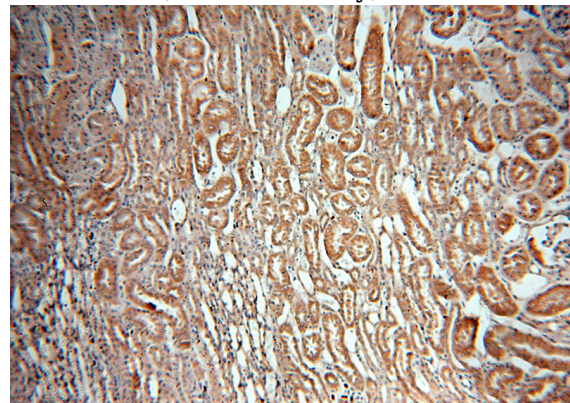
## Dilutions

Recommended Dilution:

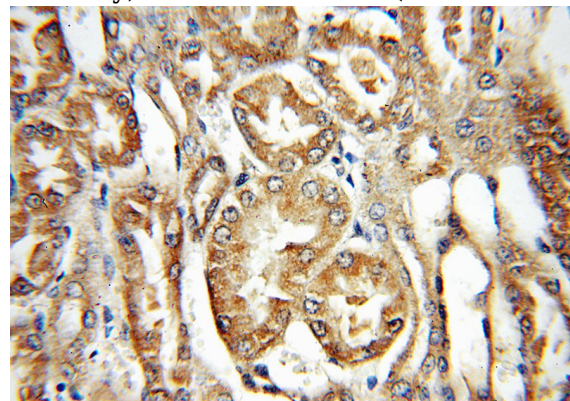
## Validations



human placenta tissue were subjected to SDS PAGE followed by western blot with Catalog No:114141(PPOX antibody) at dilution of 1:500



Immunohistochemical of paraffin-embedded human kidney using Catalog No:114141(PPOX antibody) at dilution of 1:50 (under 10x lens)



Immunohistochemical of paraffin-embedded human kidney using Catalog No:114141(PPOX

# PPOX antibody



Catalog Number: 114141

---

antibody) at dilution of 1:50 (under 40x lens)