

# Mouse CD62L/L-Selectin (His Tag) recombinant protein



Catalog Number: 502141

## General Information

### Gene Name Synonym

CD62 antigen-like family member L; Leukocyte adhesion molecule 1; Leukocyte-endothelial cell adhesion molecule 1; Lymph node homing receptor; Lymphocyte antigen 22; Lymphocyte surface MEL-14 antigen

### Protein Construction

A DNA sequence encoding the extracellular domain (Met 1-Asn 332) of mouse SELL (NP\_035476.1) precursor was fused with a polyhistidine tag at the C-terminus.

### Organism

Mouse

### Expression Host

Human Cells

## QC Testing

### Purity

> 98 % as determined by SDS-PAGE

### Endotoxin

< 1.0 EU per  $\mu\text{g}$  of the protein as determined by the LAL method

### Stability

Samples are stable for up to twelve months from date of receipt at  $-70^{\circ}\text{C}$

### Predicted N terminal

Trp 39

### Molecular Mass

The recombinant mouse SELL comprises 305 amino acids and has a predicted molecular mass of 34.7 kDa. In SDS-PAGE under reducing conditions, the apparent molecular mass of rm SELL is approximately 70-80 kDa due to glycosylation.

### Formulation

Lyophilized from sterile PBS, pH 7.4

1. 5 % trehalose and mannitol are added as protectants before lyophilization.

2. Please contact us for any concerns or special requirements.

## Usage Guide

### Storage

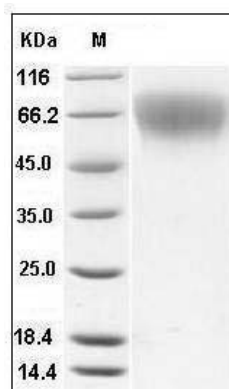
Store it under sterile conditions at  $-20^{\circ}\text{C}$  to  $-80^{\circ}\text{C}$ .

It is recommended that the protein be aliquoted for optimal storage. Avoid repeated freeze-thaw cycles.

### Reconstitution

Adding sterile water, prepare a stock solution of 0.25 mg/ml. Concentration is measured by UV-Vis.

### SDS-PAGE



Mouse CD62L / L-Selectin / SELL Protein (His Tag) SDS-PAGE