

# CAPS1 antibody



Catalog Number: 108841

## Product name

CAPS1 antibody

IHC: 1:20-1:200

IF: 1:50-1:500

## Specificity

Human, Rat; other species not tested.

## Antibody description

CAPS1 Rabbit Polyclonal antibody. Positive WB detected in rat brain tissue. Positive IHC detected in human gliomas tissue, human pancreas tissue. Positive IF detected in SH-SY5Y cells. Observed molecular weight by Western-blot: 150 kDa

## Preparation

This antibody was obtained by immunization of CAPS1 recombinant protein (Accession Number: BC015754). Purification method: Antigen affinity purified.

## Formulation

PBS with 0.1% sodium azide and 50% glycerol pH 7.3.

## Storage

Store at -20°C. DO NOT ALIQUOT

## Clonality

Polyclonal

## Ig Type

Rabbit IgG

## Applications

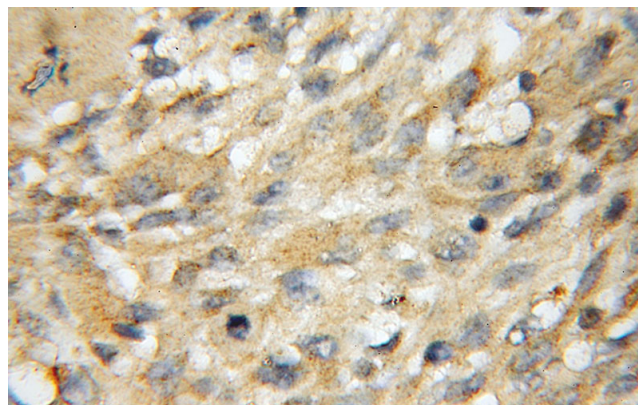
ELISA, IHC, WB, IF

## Dilutions

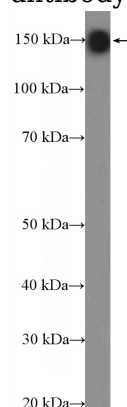
Recommended Dilution:

WB: 1:200-1:2000

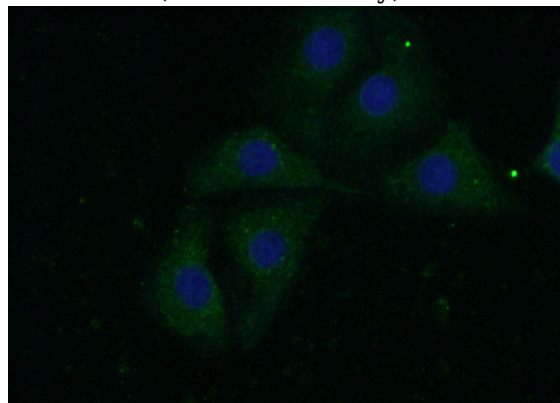
## Validations



Immunohistochemical of paraffin-embedded human gliomas using Catalog No:108841(CADPS antibody) at dilution of 1:50 (under 40x lens)



rat brain tissue were subjected to SDS PAGE followed by western blot with Catalog No:108841(CADPS Antibody) at dilution of 1:600



Immunofluorescent analysis of (-20oc Acetone) fixed SH-SY5Y cells using Catalog

# CAPS1 antibody



Catalog Number: 108841

---

No:108841(CADPS Antibody) at dilution of 1:50

and Alexa Fluor 488-conjugated AffiniPure Goat  
Anti-Rabbit IgG(H+L)