

# RPS28 antibody

Catalog Number: 114841

## Product name

RPS28 antibody

## Immunogen

[Human RPS28 Recombinant protein \(GST tag\)](#)

## Specificity

human, mouse, rat; other species not tested.

## Antibody description

RPS28 Rabbit Polyclonal antibody. Positive IHC detected in human pancreas cancer.

## Preparation

This antibody was obtained by immunization of RPS28 recombinant protein (Accession Number: XM\_047439201). Purification method: Antigen affinity purified.

## Formulation

PBS with 0.02% sodium azide and 50% glycerol pH 7.3.

## Storage

Store at -20°C. DO NOT ALIQUOT

## Clonality

Polyclonal

## Ig Type

Rabbit IgG

## Applications

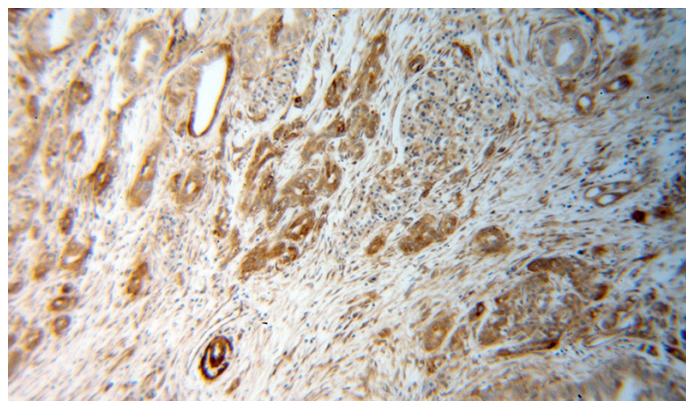
ELISA, IHC

## Dilutions

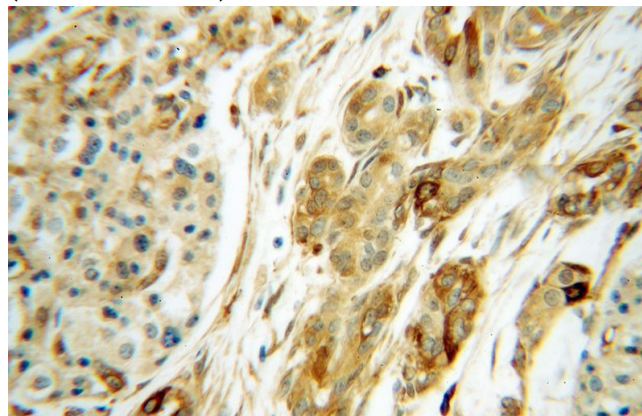
Recommended Dilution:

IHC: 1:20-1:200

## Validations



Immunohistochemical of paraffin-embedded human pancreas cancer using Catalog No:114841(RPS28 antibody) at dilution of 1:50 (under 10x lens)



Immunohistochemical of paraffin-embedded human pancreas cancer using Catalog No:114841(RPS28 antibody) at dilution of 1:50 (under 40x lens)