

ELF3 Polyclonal Antibody



Catalog Number: 164841

Product name

ELF3 Polyclonal Antibody

Specificity

Human, Rat

Antibody description

Polyclonal antibody to ELF3

Preparation

Antigen: Recombinant fusion protein containing a sequence corresponding to amino acids 1-280 of human ELF3 (NP_004424.3).

Formulation

PBS with 0.02% sodium azide, 50% glycerol, pH7.3.

Storage

Store at -20°C. Avoid freeze / thaw cycles.

Clonality

Polyclonal

Ig Type

Rabbit IgG

Applications

WB, IHC, IF

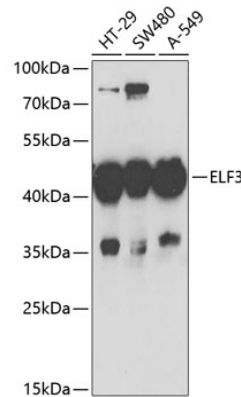
Dilutions

WB 1:500 - 1:2000

IHC 1:50 - 1:200

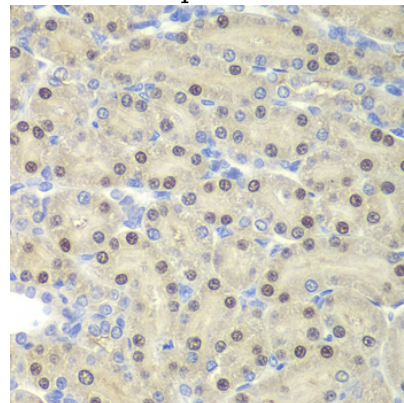
IF 1:10 - 1:100

Validations



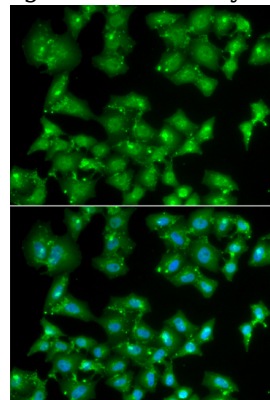
Western blot - ELF3 Polyclonal Antibody

Western blot analysis of extracts of various cell lines, using ELF3 antibody at 1:1000 dilution. Secondary antibody: HRP Goat Anti-Rabbit IgG (H+L) at 1:10000 dilution. Lysates/proteins: 25ug per lane. Blocking buffer: 3% nonfat dry milk in TBST. Detection: ECL Basic Kit. Exposure time: 90s.



Immunohistochemistry - ELF3 Polyclonal Antibody

Immunohistochemistry of paraffin-embedded rat kidney using ELF3 antibody at dilution of 1:200



(40x lens).

ELF3 Polyclonal Antibody



Catalog Number: 164841

Immunofluorescence - ELF3 Polyclonal Antibody

Immunofluorescence analysis of A549 cells using ELF3 antibody . Blue: DAPI for nuclear staining.