

# IRF8 antibody



Catalog Number: 111841

## Product name

IRF8 antibody

## Specificity

human, mouse; other species not tested.

## Antibody description

IRF8 Rabbit Polyclonal antibody. Positive IHC detected in human lymphoma. Positive WB detected in mouse spleen tissue. Observed molecular weight by Western-blot: 48kd

## Preparation

This antibody was obtained by immunization of Peptide (Accession Number: NM\_002163). Purification method: Antigen affinity purified.

## Formulation

PBS with 0.02% sodium azide and 50% glycerol pH 7.3.

## Storage

Store at -20°C. DO NOT ALIQUOT

## Clonality

Polyclonal

## Ig Type

Rabbit IgG

## Applications

ELISA, WB, IHC

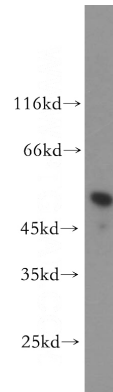
## Dilutions

Recommended Dilution:

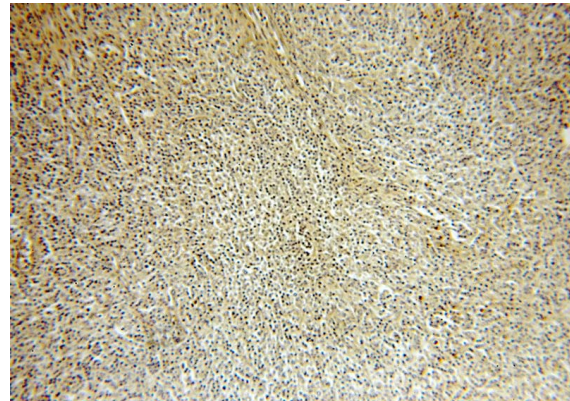
WB: 1:500-1:5000

IHC: 1:20-1:200

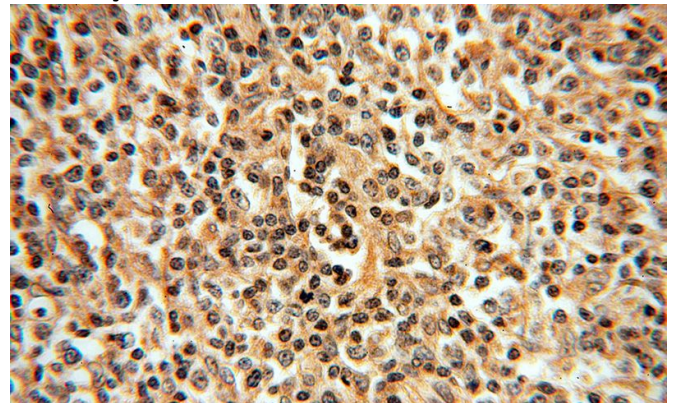
## Validations



mouse spleen tissue were subjected to SDS PAGE followed by western blot with Catalog No:111841(IRF8 antibody) at dilution of 1:300



Immunohistochemical of paraffin-embedded human lymphoma using Catalog No:111841(IRF8 antibody) at dilution of 1:100 (under 10x lens)



Immunohistochemical of paraffin-embedded human lymphoma using Catalog No:111841(IRF8 antibody) at dilution of 1:100 (under 40x lens)