

# Human CSRP1 (His Tag) recombinant protein



Catalog Number: 502441

## General Information

### Gene Name Synonym

Cysteine-rich protein 1; Epididymis luminal protein 141

### Protein Construction

A DNA sequence encoding the human CSRP1 (NP\_004069.1) (Met 1-Glu 193) was expressed, with a polyhistidine tag at the C-terminus.

### Organism

Human

### Expression Host

E. coli

## QC Testing

### Purity

> 95 % as determined by SDS-PAGE

### Endotoxin

Please contact us for more information.

### Stability

Samples are stable for up to twelve months from date of receipt at -70°C

### Predicted N terminal

Met 1

### Molecular Mass

The recombinant human CSRP1 consisting of 199

amino acids and has a calculated molecular mass of 21.4 kDa. It migrates as an approximately 23 kDa band in SDS-PAGE under reducing conditions.

### Formulation

Lyophilized from sterile 10mM Na<sub>2</sub>HPO<sub>4</sub>, 2mM KH<sub>2</sub>PO<sub>4</sub>, 2.7mM KCl, 500mM NaCl, pH 7.4

1. 5 % trehalose and mannitol are added as protectants before lyophilization.
2. Please contact us for any concerns or special requirements.

## Usage Guide

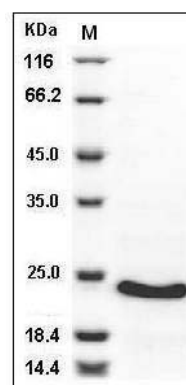
### Storage

Store it under sterile conditions at -20°C to -80°C. It is recommended that the protein be aliquoted for optimal storage. Avoid repeated freeze-thaw cycles.

### Reconstitution

Adding sterile water, prepare a stock solution of 0.25 mg/ml. Concentration is measured by UV-Vis.

### SDS-PAGE



Human CSRP1 Protein (His Tag) SDS-PAGE