

CD11B/Integrin alpha M antibody



Catalog Number: 109041

Product name

CD11B/Integrin alpha M antibody

Specificity

Human; other species not tested.

Antibody description

CD11B/Integrin alpha M Rabbit Polyclonal antibody. Positive FC detected in HL-60 cells. Positive IHC detected in human spleen tissue, human tonsillitis tissue. Positive WB detected in HL-60 cells, Jurkat cells. Observed molecular weight by Western-blot: 110-170 kDa

Preparation

This antibody was obtained by immunization of Peptide (Accession Number: NM_000632). Purification method: Antigen affinity purified.

Formulation

PBS with 0.02% sodium azide and 50% glycerol pH 7.3.

Storage

Store at -20°C. DO NOT ALIQUOT

Clonality

Polyclonal

Ig Type

Rabbit IgG

Applications

ELISA, IHC, WB, FC

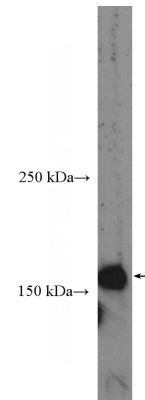
Dilutions

Recommended Dilution:

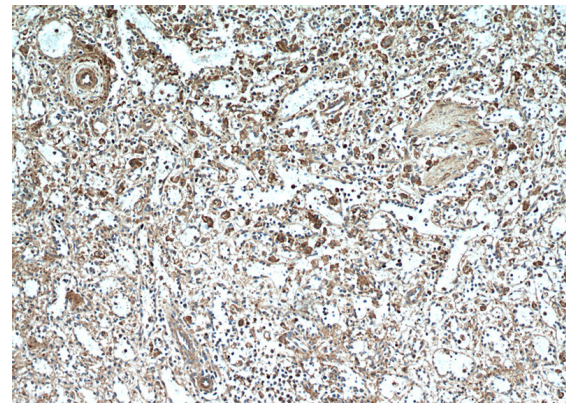
WB: 1:200-1:2000

IHC: 1:20-1:200

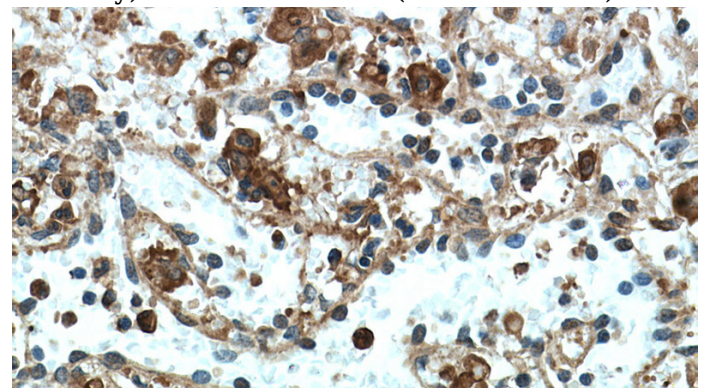
Validations



HL-60 cells were subjected to SDS PAGE followed by western blot with Catalog No:109041(CD11B/Integrin alpha M Antibody) at dilution of 1:600



Immunohistochemical of paraffin-embedded human spleen using Catalog No:109041(CD11B antibody) at dilution of 1:50 (under 10x lens)

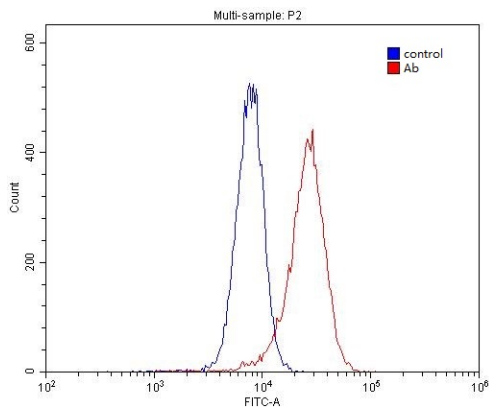


Immunohistochemical of paraffin-embedded human spleen using Catalog No:109041(CD11B antibody) at dilution of 1:50 (under 40x lens)

CD11B/Integrin alpha M antibody



Catalog Number: 109041



1×10^6 HL-60 cells were stained with 0.2ug CD11B/Integrin alpha M antibody (Catalog No:109041, red) and control antibody (blue). Fixed with 4% PFA blocked with 3% BSA (30 min). Alexa Fluor 488-conjugated AffiniPure Goat Anti-Rabbit IgG(H+L) with dilution 1:1500.