

# ZFP36L1 antibody



Catalog Number: 117041

## Product name

ZFP36L1 antibody

IHC: 1:20-1:200

IF: 1:20-1:200

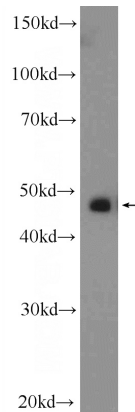
## Specificity

Human, Mouse, Rat; other species not tested.

## Antibody description

ZFP36L1 Rabbit Polyclonal antibody. Positive IHC detected in human placenta tissue, human ovary tissue. Positive IF detected in HepG2 cells. Positive WB detected in HeLa cells, RAW 264.7 cells. Observed molecular weight by Western-blot: 45-50 kDa

## Validations



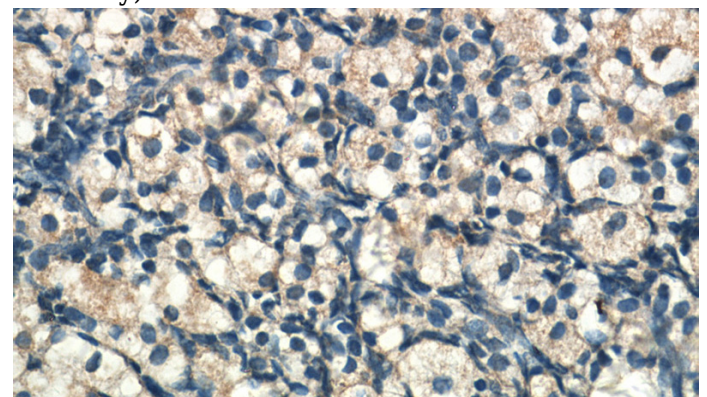
## Preparation

This antibody was obtained by immunization of ZFP36L1 recombinant protein (Accession Number: NM\_001244698). Purification method: Antigen affinity purified.

HeLa cells were subjected to SDS PAGE followed by western blot with Catalog No:117041(ZFP36L1 Antibody) at dilution of 1:300

## Formulation

PBS with 0.1% sodium azide and 50% glycerol pH 7.3.



## Storage

Store at -20°C. DO NOT ALIQUOT

## Clonality

Polyclonal

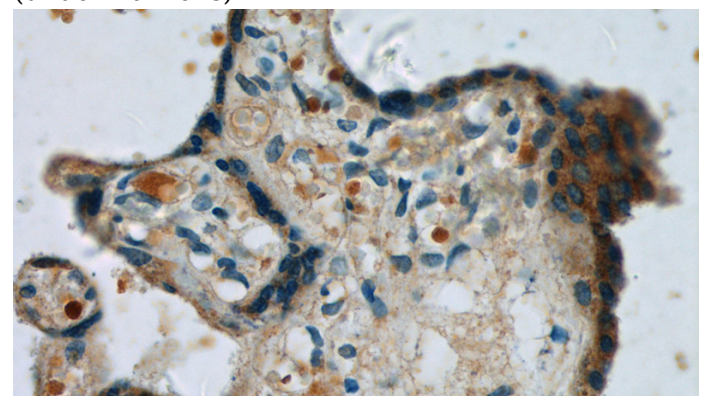
Immunohistochemistry of paraffin-embedded human ovary tissue slide using Catalog No:117041(ZFP36L1 Antibody) at dilution of 1:50 (under 40x lens)

## Ig Type

Rabbit IgG

## Applications

ELISA, WB, IHC, IF



## Dilutions

Recommended Dilution:

WB: 1:200-1:1000

Immunohistochemistry of paraffin-embedded

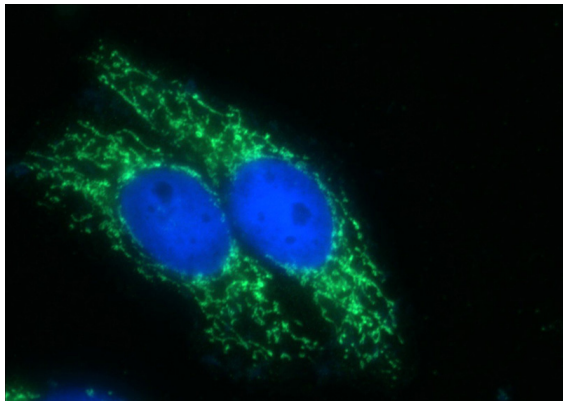
# ZFP36L1 antibody



Catalog Number: 117041

---

human placenta tissue slide using Catalog No:117041(ZFP36L1 Antibody) at dilution of 1:50 (under 40x lens)



Immunofluorescent analysis of HepG2 cells using Catalog No:117041(ZFP36L1 Antibody) at dilution of 1:50 and Alexa Fluor 488-conjugated AffiniPure Goat Anti-Rabbit IgG(H+L)