

THEM2 antibody



Catalog Number: 116041

Product name

THEM2 antibody

WB: 1:500-1:5000

IHC: 1:20-1:200

Specificity

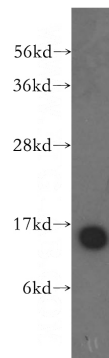
Human, Mouse, Rat; other species not tested.

IF: 1:50-1:500

Antibody description

THEM2 Rabbit Polyclonal antibody. Positive IF detected in HepG2 cells. Positive IHC detected in human kidney tissue. Positive WB detected in HeLa cells, HepG2 cells, human brain tissue, human colon tissue, human liver tissue, mouse kidney tissue. Observed molecular weight by Western-blot: 16 kDa

Validations



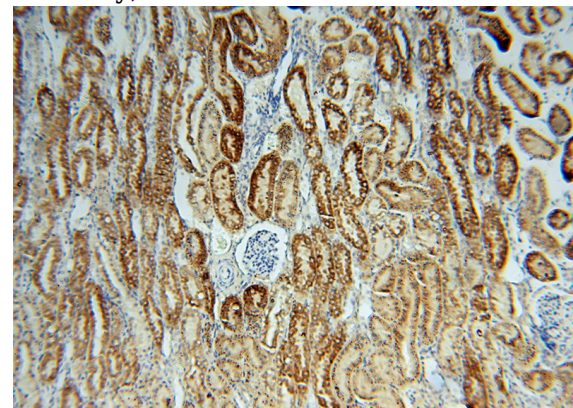
Preparation

This antibody was obtained by immunization of THEM2 recombinant protein (Accession Number: NM_018473). Purification method: Antigen affinity purified.

HeLa cells were subjected to SDS PAGE followed by western blot with Catalog No:116041(THEM2 antibody) at dilution of 1:500

Formulation

PBS with 0.02% sodium azide and 50% glycerol pH 7.3.



Storage

Store at -20°C. DO NOT ALIQUOT

Clonality

Polyclonal

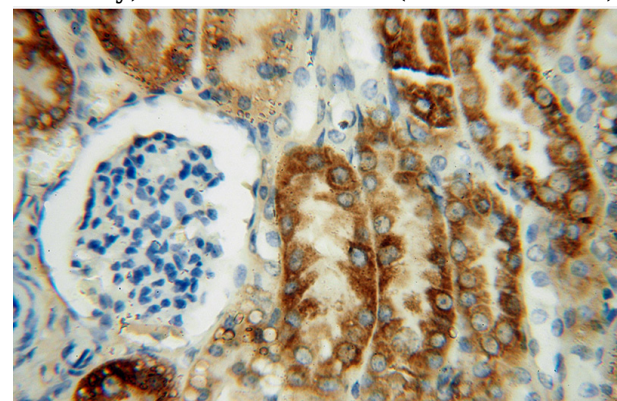
Immunohistochemical of paraffin-embedded human kidney using Catalog No:116041(THEM2 antibody) at dilution of 1:50 (under 10x lens)

Ig Type

Rabbit IgG

Applications

ELISA, WB, IHC, IF



Dilutions

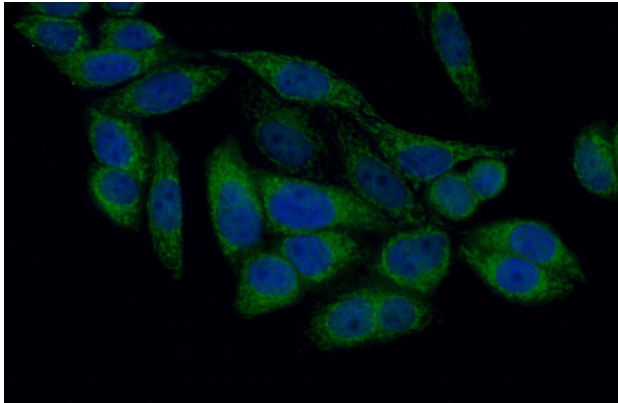
Recommended Dilution:

THEM2 antibody



Catalog Number: 116041

Immunohistochemical of paraffin-embedded human kidney using Catalog No:116041(THEM2 antibody) at dilution of 1:50 (under 40x lens)



Immunofluorescent analysis of (10% Formaldehyde) fixed HepG2 cells using Catalog No:116041(THEM2 Antibody) at dilution of 1:50 and Alexa Fluor 488-conjugated AffiniPure Goat Anti-Rabbit IgG(H+L)