

## General Information

### Gene Name Synonym

T-Cell Surface Glycoprotein CD3 Epsilon Chain, T-Cell Surface Antigen T3/Leu-4 Epsilon Chain, CD3e, CD3E, T3E

### Protein Construction

A DNA sequence encoding the Human CD3E/T3E Asp23-Asp126 is expressed with a Fc tag at the C-terminus.

### Organism

Human

### Expression Host

Human Cells

## QC Testing

### Purity

>95% as determined by SDS-PAGE.

### Endotoxin

<1.0 EU per µg protein as determined by the LAL method.

### Stability

Store for up to 12 months at -20°C to -80°C as lyophilized powder. Aliquots of reconstituted samples are stable at < -20°C for 3 months.

## Formulation

Lyophilized from a 0.2 µm filtered solution of PBS, pH7.4.

## Usage Guide

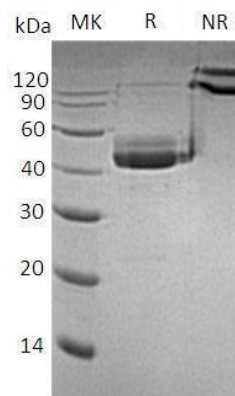
### Storage

Lyophilized protein should be stored at <-20°C, though stable at room temperature for 3 weeks. Reconstituted protein solution can be stored at 4-7°C for 2-7 days.

### Reconstitution

Always centrifuge tubes before opening. Do not mix by vortex or pipetting. It is not recommended to reconstitute to a concentration less than 100µg/ml. Dissolve the lyophilized protein in ddH<sub>2</sub>O. Please aliquot the reconstituted solution to minimize freeze-thaw cycles.

## SDS-PAGE



Human CD3E/T3E (Fc tag) recombinant protein