

## General Information

### Gene Name Synonym

Motch A; mT14; p300; Notch 1 extracellular truncation; Notch 1 intracellular domain

### Protein Construction

A DNA sequence encoding the mouse NOTCH1 (NP\_032740.3) N-terminal fragment (Met 1-Gln 526) was expressed with a C-terminal polyhistidine tag.

### Organism

Mouse

### Expression Host

Baculovirus-Insect Cells

## QC Testing

### Activity

1. Measured by its binding ability in a functional ELISA.
2. Immobilized human DLL4 (cat: 503992) at 10  $\mu\text{g}/\text{mL}$  (100  $\mu\text{l}/\text{well}$ ) can bind biotinylated mouse NOTCH1-his, The  $\text{EC}_{50}$  of biotinylated mouse NOTCH1-his is 40  $\text{ng}/\text{mL}$ .
3. Immobilized mouse DLL4-his (Cat:502366) at 10  $\mu\text{g}/\text{mL}$  (100  $\mu\text{l}/\text{well}$ ) can bind biotinylated mouse NOTCH1-his, The  $\text{EC}_{50}$  of biotinylated mouse NOTCH1-his is 30  $\text{ng}/\text{mL}$ .

### Purity

> 82 % as determined by SDS-PAGE

### Endotoxin

< 1.0 EU per  $\mu\text{g}$  of the protein as determined by the LAL method

### Stability

Samples are stable for up to twelve months from

date of receipt at  $-70^{\circ}\text{C}$

### Predicted N terminal

Ala 19

### Molecular Mass

The secreted recombinant mouse NOTCH1 (aa 1-526) consists of 518 amino acids and has a calculated molecular mass of 55 kDa. It migrates as an approximately 80 kDa band in SDS-PAGE under reducing conditions.

### Formulation

Lyophilized from sterile 20mM Tris, 500mM NaCl, pH 7.4, 10% gly

1. 5 % trehalose and mannitol are added as protectants before lyophilization.
2. Please contact us for any concerns or special requirements.

## Usage Guide

### Storage

Store it under sterile conditions at  $-20^{\circ}\text{C}$  to  $-80^{\circ}\text{C}$ . It is recommended that the protein be aliquoted for optimal storage. Avoid repeated freeze-thaw cycles.

### Reconstitution

Adding sterile water, prepare a stock solution of 0.25  $\text{mg}/\text{ml}$ . Concentration is measured by UV-Vis.

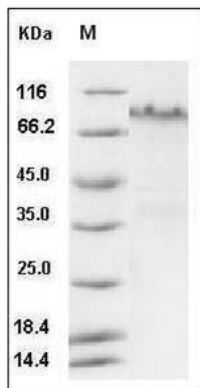
### SDS-PAGE

# Mouse NOTCH1 (His Tag) recombinant protein



Catalog Number: 503731

---



Mouse Notch-1 / NOTCH1 Protein (His Tag) SDS-PAGE