

General Information

Protein Construction

A DNA sequence encoding the human SORCS1 (Q8WY21-1) extracellular domain (Ser 111-Ser 1099) was fused with a polyhistidine tag at the C-terminus and a signal peptide at the N-terminus

Organism

Human

Expression Host

Human Cells

QC Testing

Purity

> 92 % as determined by SDS-PAGE

Endotoxin

< 1.0 EU per μg of the protein as determined by the LAL method

Stability

Samples are stable for up to twelve months from date of receipt at -70°C

Predicted N terminal

Ser 111

Molecular Mass

The recombinant human SORCS1 consists of 1000 amino acids and predicts a molecular mass of

113 kDa. In SDS-PAGE under reducing conditions, the apparent molecular mass of rhSORCS1 is approximately 130 kDa due to glycosylation

Formulation

Lyophilized from sterile PBS, pH 7.4

1. 5 % trehalose and mannitol are added as protectants before lyophilization.

2. Please contact us for any concerns or special requirements.

Usage Guide

Storage

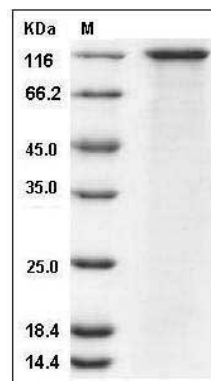
Store it under sterile conditions at -20°C to -80°C .

It is recommended that the protein be aliquoted for optimal storage. Avoid repeated freeze-thaw cycles.

Reconstitution

Adding sterile water, prepare a stock solution of 0.25 mg/ml. Concentration is measured by UV-Vis.

SDS-PAGE



Human SorCS1 Protein (His Tag) SDS-PAGE