

# CKMT2 antibody

Catalog Number: 109331

## Product name

CKMT2 antibody

## Specificity

Human, Mouse, Rat; other species not tested.

## Antibody description

CKMT2 Rabbit Polyclonal antibody. Positive WB detected in human skeletal muscle tissue, human heart tissue, Jurkat cells. Positive IHC detected in human skeletal muscle tissue, human heart tissue. Observed molecular weight by Western-blot: 48 kDa

## Preparation

This antibody was obtained by immunization of CKMT2 recombinant protein (Accession Number: NM\_001099736). Purification method: Antigen affinity purified.

## Formulation

PBS with 0.02% sodium azide and 50% glycerol pH 7.3.

## Storage

Store at -20°C. DO NOT ALIQUOT

## Clonality

Polyclonal

## Ig Type

Rabbit IgG

## Applications

ELISA, WB, IHC

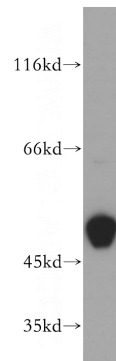
## Dilutions

Recommended Dilution:

WB: 1:500-1:5000

IHC: 1:20-1:200

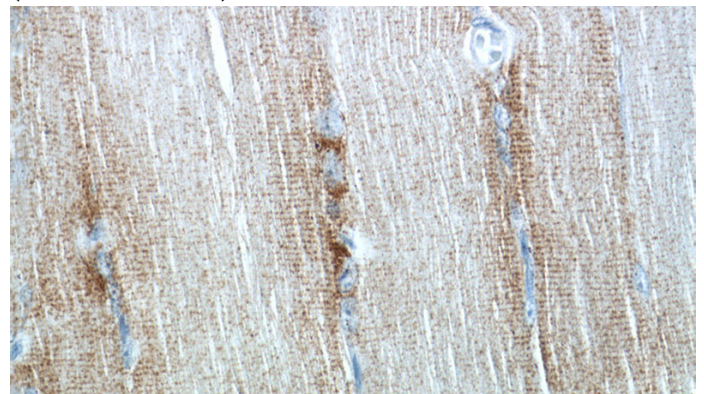
## Validations



human skeletal muscle tissue were subjected to SDS PAGE followed by western blot with Catalog No:109331(CKMT2 antibody) at dilution of 1:800



Immunohistochemistry of paraffin-embedded human skeletal muscle tissue slide using Catalog No:109331(CKMT2 Antibody) at dilution of 1:50 (under 10x lens)



Immunohistochemistry of paraffin-embedded human skeletal muscle tissue slide using Catalog No:109331(CKMT2 Antibody) at dilution of 1:50

# CKMT2 antibody



Catalog Number: 109331

---

(under 40x lens)