

ATL1 antibody

Catalog Number: 108331

Product name

ATL1 antibody

Specificity

Human, Mouse, Rat; other species not tested.

Antibody description

ATL1 Rabbit Polyclonal antibody. Positive WB detected in human brain tissue, human cerebellum tissue. Positive IP detected in mouse brain tissue. Observed molecular weight by Western-blot: 55 kDa

Preparation

This antibody was obtained by immunization of ATL1 recombinant protein (Accession Number: XM_047431430). Purification method: Antigen affinity purified.

Formulation

PBS with 0.1% sodium azide and 50% glycerol pH 7.3.

Storage

Store at -20°C. DO NOT ALIQUOT

Clonality

Polyclonal

Ig Type

Rabbit IgG

Applications

ELISA, WB, IP

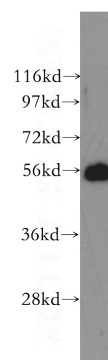
Dilutions

Recommended Dilution:

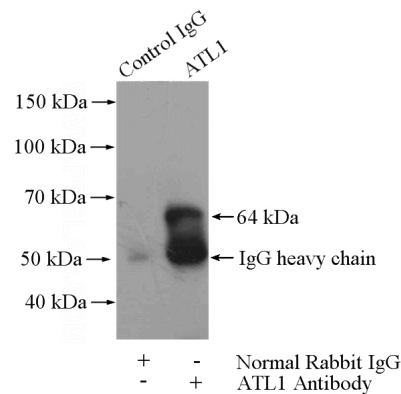
WB: 1:500-1:5000

IP: 1:200-1:2000

Validations



human brain tissue were subjected to SDS PAGE followed by western blot with Catalog No:108331(ATL1 antibody) at dilution of 1:500



IP Result of anti-ATL1 (IP:Catalog No:108331, 4ug; Detection:Catalog No:108331 1:500) with mouse brain tissue lysate 4000ug.