

Human CCL3/Mip1a (His Tag) recombinant protein



Catalog Number: 502331

General Information

Protein Construction

A DNA sequence encoding human CCL3 (NP_002974.1) (Ala23-Ala92) was expressed with a polyhistidine tag at the C-terminus.

Organism

Human

Expression Host

Yeast

QC Testing

Purity

> 95 % as determined by SDS-PAGE

Endotoxin

Please contact us for more information.

Stability

Samples are stable for up to twelve months from date of receipt at -70°C

Predicted N terminal

Ala 23

Molecular Mass

The recombinant human CCL3 consists of 80 amino acids and predicts a molecular mass of 9.2

KDa. It migrates as an approximately 14 KDa band in SDS-PAGE under reducing conditions.

Formulation

Lyophilized from sterile PBS, pH 7.4.

1. 5 % trehalose and mannitol are added as protectants before lyophilization.

2. Please contact us for any concerns or special requirements.

Usage Guide

Storage

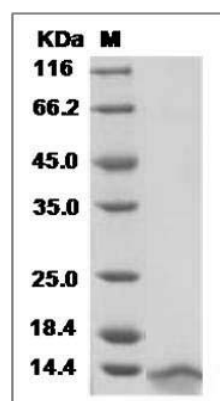
Store it under sterile conditions at -20°C to -80°C.

It is recommended that the protein be aliquoted for optimal storage. Avoid repeated freeze-thaw cycles.

Reconstitution

Adding sterile water, prepare a stock solution of 0.25 mg/ml. Concentration is measured by UV-Vis.

SDS-PAGE



Human CCL3 / Mip1a Protein (His Tag) SDS-PAGE