

HACL1 antibody

Catalog Number: 111331

Product name

HACL1 antibody

IHC: 1:20-1:200

IF: 1:50-1:500

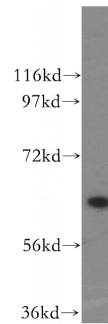
Specificity

Human, Mouse, Rat; other species not tested.

Antibody description

HACL1 Rabbit Polyclonal antibody. Positive WB detected in HeLa cells, HEK-293 cells. Positive IF detected in HeLa cells. Positive IHC detected in human liver tissue, human skeletal muscle tissue, rat kidney tissue, rat liver tissue. Observed molecular weight by Western-blot: 64 kDa

Validations



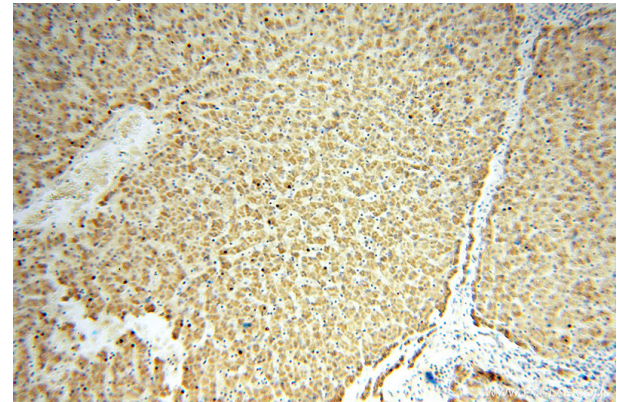
Preparation

This antibody was obtained by immunization of HACL1 recombinant protein (Accession Number: NM_012260). Purification method: Antigen affinity purified.

HeLa cells were subjected to SDS PAGE followed by western blot with Catalog No:111331(HACL1 antibody) at dilution of 1:500

Formulation

PBS with 0.02% sodium azide and 50% glycerol pH 7.3.



Storage

Store at -20°C. DO NOT ALIQUOT

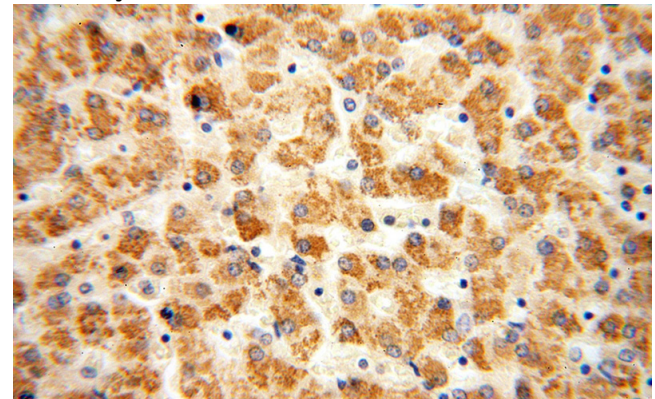
Clonality

Polyclonal

Immunohistochemical of paraffin-embedded human liver using Catalog No:111331(HACL1 antibody) at dilution of 1:100 (under 10x lens)

Ig Type

Rabbit IgG



Applications

ELISA, WB, IHC, IF

Dilutions

Recommended Dilution:

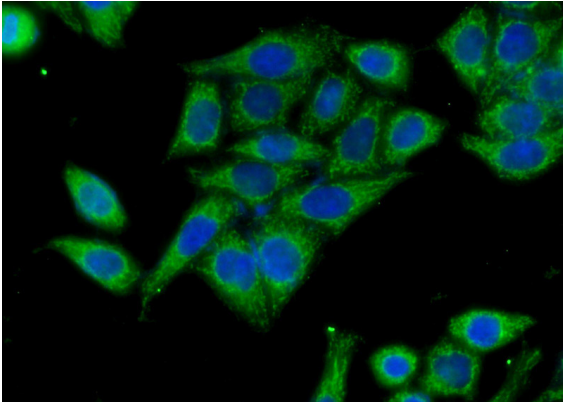
WB: 1:500-1:5000

Immunohistochemical of paraffin-embedded human liver using Catalog No:111331(HACL1

HACL1 antibody

Catalog Number: 111331

antibody) at dilution of 1:100 (under 40x lens)



Immunofluorescent analysis of (-20oc Ethanol) fixed HeLa cells using Catalog No:111331(HACL1 Antibody) at dilution of 1:50 and Alexa Fluor 488-conjugated AffiniPure Goat Anti-Rabbit IgG(H+L)