

# ENTPD2 antibody

Catalog Number: 110331

## Product name

ENTPD2 antibody

## Specificity

Human, Mouse, Rat; other species not tested.

## Antibody description

ENTPD2 Rabbit Polyclonal antibody. Positive IP detected in K-562 cells. Positive WB detected in K-562 cells, human placenta tissue. Observed molecular weight by Western-blot: 70 kDa

## Preparation

This antibody was obtained by immunization of ENTPD2 recombinant protein (Accession Number: NM\_203468). Purification method: Antigen affinity purified.

## Formulation

PBS with 0.1% sodium azide and 50% glycerol pH 7.3.

## Storage

Store at -20°C. DO NOT ALIQUOT

## Clonality

Polyclonal

## Ig Type

Rabbit IgG

## Applications

ELISA, WB, IP

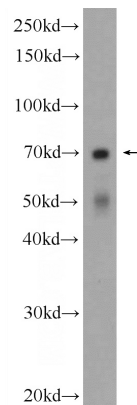
## Dilutions

Recommended Dilution:

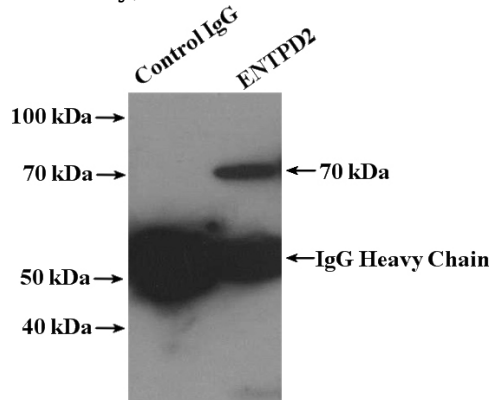
WB: 1:200-1:2000

IP: 1:200-1:1000

## Validations



K-562 cells were subjected to SDS PAGE followed by western blot with Catalog No:110331(ENTPD2 Antibody) at dilution of 1:600



IP Result of anti-ENTPD2 (IP:Catalog No:110331, 4ug; Detection:Catalog No:110331 1:300) with K-562 cells lysate 4000ug.