

# Anti-Ephrin-B2 antibody



Catalog Number: 100331

## Product name

Anti-Ephrin-B2 antibody

## Immunogen

[Mouse Ephrin-B2 \(His Tag\) recombinant protein](#)

## Specificity

Mouse Ephrin-B2

## Antibody description

Rabbit polyclonal to Ephrin-B2

## Preparation

Produced in rabbits immunized with purified, recombinant Mouse Ephrin-B2 (rh Ephrin-B2; NP\_034241.2; Met1-Ala232). Ephrin-B2 specific IgG was purified by Mouse Ephrin-B2 affinity chromatography.

## Formulation

0.2  $\mu$ m filtered solution in PBS

## Storage

This antibody can be stored at 2°C-8°C for one month without detectable loss of activity. Antibody products are stable for twelve months from date of receipt when stored at -20°C to -80°C.

Preservative-Free.

Sodium azide is recommended to avoid contamination (final concentration 0.05%-0.1%). It is toxic to cells and should be disposed of properly. Avoid repeated freeze-thaw cycles.

## Clonality

Polyclonal

## Ig Type

Rabbit IgG

## Applications

ELISA, IHC-P

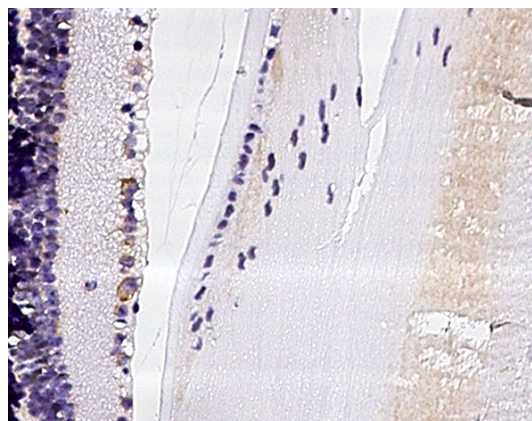
## Dilutions

ELISA:0.1-0.2  $\mu$ g/mL

This antibody can be used at 0.1-0.2  $\mu$ g/mL with the appropriate secondary reagents to detect Mouse Ephrin-B2. The detection limit for Mouse Ephrin-B2 is < 0.039 ng/well.

IHC-P: 0.1-2  $\mu$ g/ml

## Validations



Ephrin-B2 Antibody, Rabbit PAb, Antigen Affinity Purified, Immunohistochemistry