

PDLIM5 antibody

Catalog Number: 113631

Product name

PDLIM5 antibody

IP: 1:200-1:1000

IHC: 1:20-1:200

Specificity

Human, Mouse, Rat; other species not tested.

Antibody description

PDLIM5 Rabbit Polyclonal antibody. Positive IP detected in A549 cells. Positive WB detected in HeLa cells, A549 cells, human liver tissue, NIH/3T3. Positive IHC detected in human prostate cancer tissue. Observed molecular weight by Western-blot: 63-68 kDa

Preparation

This antibody was obtained by immunization of PDLIM5 recombinant protein (Accession Number: NM_006457). Purification method: Antigen affinity purified.

Formulation

PBS with 0.1% sodium azide and 50% glycerol pH 7.3.

Storage

Store at -20°C. DO NOT ALIQUOT

Clonality

Polyclonal

Ig Type

Rabbit IgG

Applications

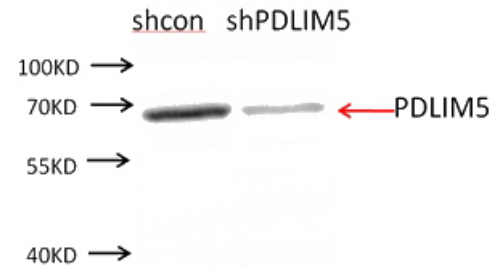
ELISA, IHC, IP, WB

Dilutions

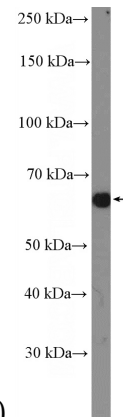
Recommended Dilution:

WB: 1:500-1:5000

Validations

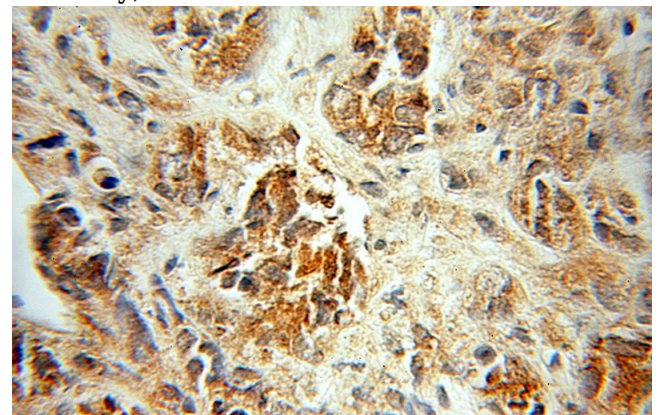


NIH3T3 cells were subjected to SDS PAGE followed by western blot with Catalog No:113631(PDLIM5 antibody) at dilution of 1:250. (Data provided by Angran Biotech



(www.miRNAlab.com)).

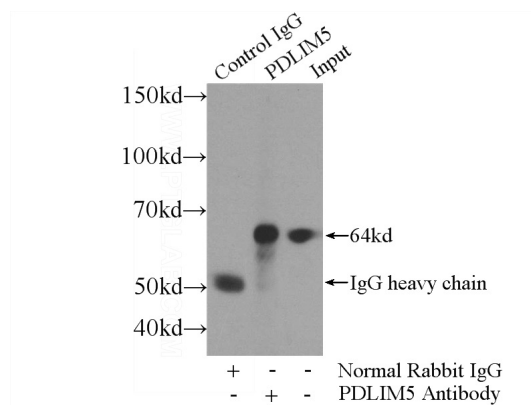
HeLa cells were subjected to SDS PAGE followed by western blot with Catalog No:113631(PDLIM5 Antibody) at dilution of 1:1000



PDLIM5 antibody

Catalog Number: 113631

Immunohistochemical of paraffin-embedded human prostate cancer using Catalog No:113631(PDLIM5 antibody) at dilution of 1:50 (under 10x lens)



IP Result of anti-PDLIM5 (IP:Catalog No:113631, 4ug; Detection:Catalog No:113631 1:300) with A549 cells lysate 2400ug.