

Human PSPH recombinant protein



Catalog Number: 501631

General Information

Gene Name Synonym

L-3-phosphoserine phosphatase; O-phosphoserine phosphohydrolase

Protein Construction

A DNA sequence encoding the human PSPH (P78330) (Met 1-Glu 225) was expressed and purified.

Organism

Human

Expression Host

E. coli

QC Testing

Purity

> 84 % as determined by SDS-PAGE

Endotoxin

Please contact us for more information.

Stability

Samples are stable for up to twelve months from date of receipt at -70°C

Predicted N terminal

Met 1

Molecular Mass

The recombinant human PSPH consists of 225 amino acids and has a calculated molecular mass of 25KD. It migrates as an approximately 28KDa band in SDS-PAGE under reducing conditions.

Formulation

Lyophilized from sterile PBS, pH 7.5

1. 5 % trehalose and mannitol are added as protectants before lyophilization.

2. Please contact us for any concerns or special requirements.

Usage Guide

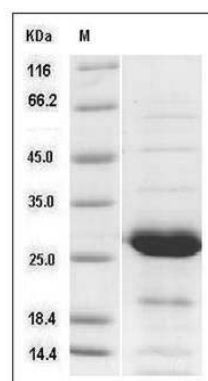
Storage

Store it under sterile conditions at -20°C to -80°C. It is recommended that the protein be aliquoted for optimal storage. Avoid repeated freeze-thaw cycles.

Reconstitution

Adding sterile water, prepare a stock solution of 0.25 mg/ml. Concentration is measured by UV-Vis.

SDS-PAGE



Human PSPH Protein SDS-PAGE