

ASL antibody



Catalog Number: 108231

Product name

ASL antibody

Specificity

Human, Mouse, Rat; other species not tested.

Antibody description

ASL Rabbit Polyclonal antibody. Positive WB detected in mouse liver tissue, mouse kidney tissue. Observed molecular weight by Western-blot: 49 kDa

Preparation

This antibody was obtained by immunization of ASL recombinant protein (Accession Number: NM_001024943). Purification method: Antigen affinity purified.

Formulation

PBS with 0.1% sodium azide and 50% glycerol pH 7.3.

Storage

Store at -20°C. DO NOT ALIQUOT

Clonality

Polyclonal

Ig Type

Rabbit IgG

Applications

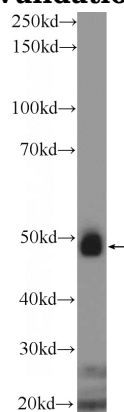
ELISA, WB

Dilutions

Recommended Dilution:

WB: 1:200-1:1000

Validations



mouse liver tissue were subjected to SDS PAGE followed by western blot with Catalog No:108231(ASL Antibody) at dilution of 1:300