

# TRAF3IP1 antibody



Catalog Number: 116231

## Product name

TRAF3IP1 antibody

WB: 1:200-1:1000

IP: 1:200-1:1000

## Specificity

Human, Mouse, Rat; other species not tested.

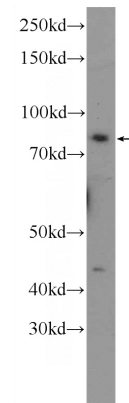
IHC: 1:20-1:200

IF: 1:10-1:100

## Antibody description

TRAF3IP1 Rabbit Polyclonal antibody. Positive IP detected in HeLa cells. Positive WB detected in HEK-293 cells. Positive IF detected in NIH/3T3 cells. Positive IHC detected in human breast cancer tissue, human cervical cancer tissue. Observed molecular weight by Western-blot: 83 kDa

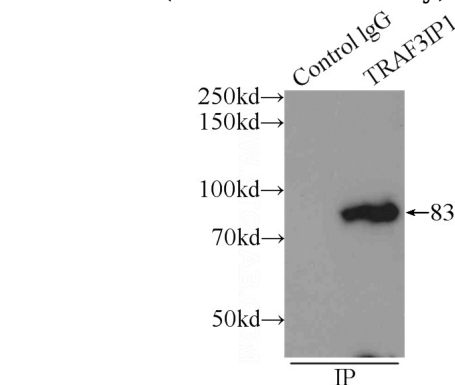
## Validations



HEK-293 cells were subjected to SDS PAGE followed by western blot with Catalog No:116231 (TRAF3IP1 Antibody) at dilution of

## Preparation

This antibody was obtained by immunization of TRAF3IP1 recombinant protein (Accession Number: XM\_006712414). Purification method: Antigen affinity purified.



1:300

IP Result of anti-TRAF3IP1 (IP:Catalog No:116231, 3ug; Detection:Catalog No:116231 1:300) with HeLa cells lysate 2000ug.

## Formulation

PBS with 0.1% sodium azide and 50% glycerol pH 7.3.

## Storage

Store at -20°C. DO NOT ALIQUOT

## Clonality

Polyclonal

## Ig Type

Rabbit IgG

## Applications

ELISA, IP, WB, IF, IHC

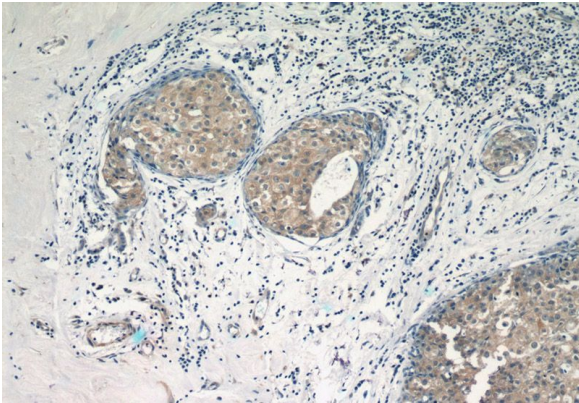
## Dilutions

Recommended Dilution:

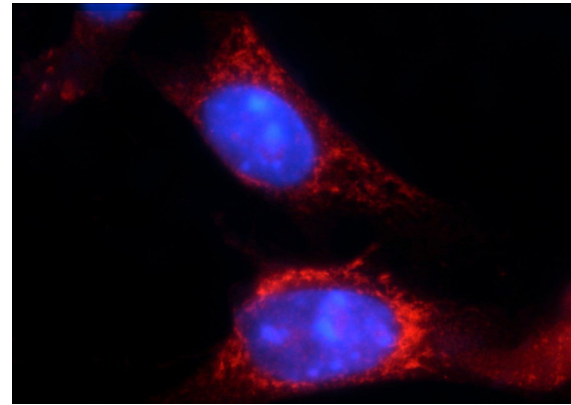
# TRAF3IP1 antibody

Catalog Number: 116231

---



Immunohistochemistry of paraffin-embedded human breast cancer tissue slide using Catalog No:116231 (TRAF3IP1 Antibody) at dilution of 1:50 (under 40x lens)



Immunofluorescent analysis of NIH/3T3 cells using Catalog No:116231 (TRAF3IP1 Antibody) at dilution of 1:25 and Rhodamine-Goat anti-Rabbit IgG

