

SIKE1 antibody



Catalog Number: 115231

Product name

SIKE1 antibody

Immunogen

[Human SIKE1 Recombinant protein \(GST tag\)](#)

Specificity

Human, Mouse, Rat; other species not tested.

Antibody description

SIKE1 Rabbit Polyclonal antibody. Positive WB detected in mouse brain tissue. Positive IHC detected in human liver tissue, human heart tissue. Observed molecular weight by Western-blot: 26 kDa

Preparation

This antibody was obtained by immunization of SIKE1 recombinant protein (Accession Number: NM_025073). Purification method: Antigen affinity purified.

Formulation

PBS with 0.02% sodium azide and 50% glycerol pH 7.3.

Storage

Store at -20°C. DO NOT ALIQUOT

Clonality

Polyclonal

Ig Type

Rabbit IgG

Applications

ELISA, WB, IHC

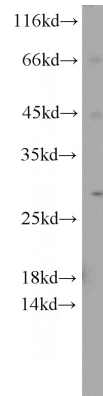
Dilutions

Recommended Dilution:

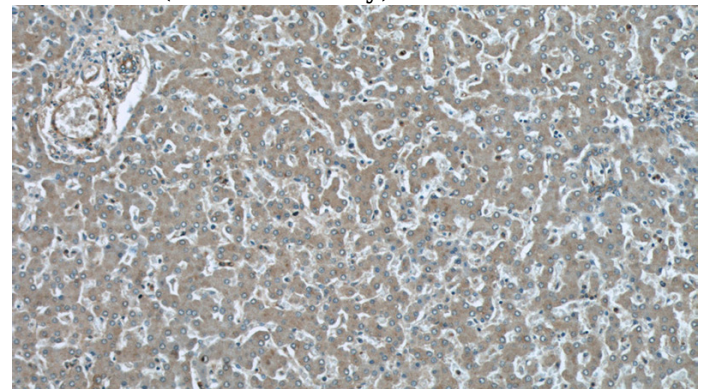
WB: 1:200-1:2000

IHC: 1:20-1:200

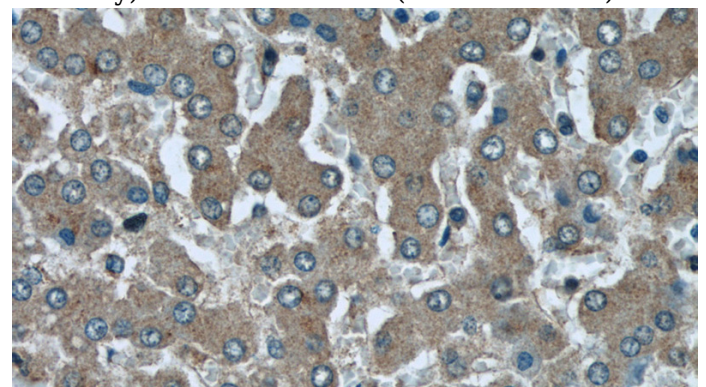
Validations



mouse brain tissue were subjected to SDS PAGE followed by western blot with Catalog No:115231(SIKE1 antibody) at dilution of 1:500



Immunohistochemical of paraffin-embedded human liver using Catalog No:115231(SIKE1 antibody) at dilution of 1:50 (under 10x lens)



Immunohistochemical of paraffin-embedded

SIKE1 antibody



Catalog Number: 115231

human liver using Catalog No:115231(SIKE1 antibody) at dilution of 1:50 (under 40x lens)