

Anti-MSH2 Rabbit antibody



Catalog Number: 166931

Product name

Anti-MSH2 Rabbit antibody

Specificity

Human

Antibody description

MSH2 Rabbit polyclonal antibody

Preparation

Antigen: A synthetic peptide of human MSH2

Formulation

Supplied in 50nM Tris-Glycine(pH 7.4), 0.15M NaCl, 40%Glycerol, 0.01% sodium azide and 0.05% BSA.

Storage

Store at -20°C. Stable for 12 months from date of receipt.

Clonality

Polyclonal

Ig Type

Rabbit IgG

Applications

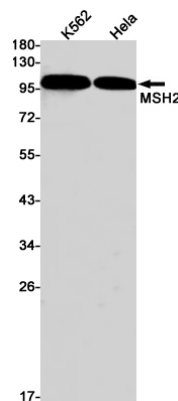
WB, IP

Dilutions

WB: 1/1000-1/5000

IP: 1/20-1/50

Validations



Western blot detection of MSH2 in K562, HeLa cell lysates using MSH2 Rabbit pAb(1:1000 diluted). Predicted band size: 105kDa. Observed band size: 105kDa.