

# MYH14 antibody

Catalog Number: 112931

## Product name

MYH14 antibody

IP: 1:1000-1:10000

IF: 1:10-1:100

## Specificity

Human, Mouse, Rat; other species not tested.

## Antibody description

MYH14 Rabbit Polyclonal antibody. Positive WB detected in COLO 320 cells, human skeletal muscle tissue, mouse colon tissue, mouse kidney tissue. Positive IP detected in mouse kidney tissue. Positive IF detected in Hela cells. Observed molecular weight by Western-blot: 228 kDa

## Preparation

This antibody was obtained by immunization of Peptide (Accession Number: NM\_024729). Purification method: Antigen affinity purified.

## Formulation

PBS with 0.02% sodium azide and 50% glycerol pH 7.3.

## Storage

Store at -20°C. DO NOT ALIQUOT

## Clonality

Polyclonal

## Ig Type

Rabbit IgG

## Applications

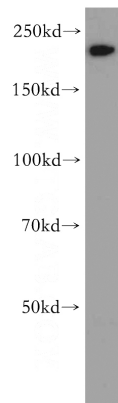
ELISA, WB, IF, IP

## Dilutions

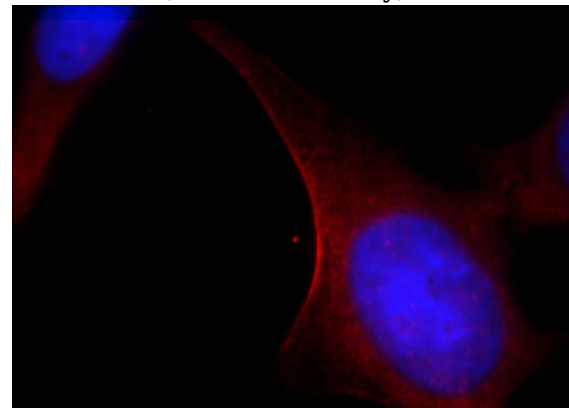
Recommended Dilution:

WB: 1:500-1:5000

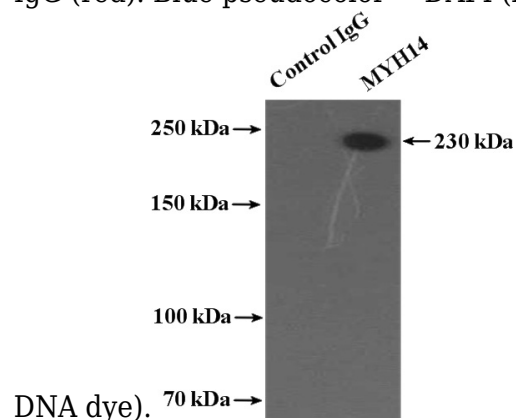
## Validations



COLO 320 cells were subjected to SDS PAGE followed by western blot with Catalog No:112931(MYH14 antibody) at dilution of 1:800



Immunofluorescent analysis of Hela cells, using MYH14 antibody Catalog No:112931 at 1:25 dilution and Rhodamine-labeled goat anti-rabbit IgG (red). Blue pseudocolor = DAPI (fluorescent



# MYH14 antibody



Catalog Number: 112931

---

IP Result of anti-MYH14 (IP:Catalog No:112931,

4ug; Detection:Catalog No:112931 1:2000) with mouse kidney tissue lysate 4800ug.