

# SPDEF Polyclonal Antibody



Catalog Number: 161931

## Product name

SPDEF Polyclonal Antibody

## Specificity

Human, Mouse, Rat

## Antibody description

Polyclonal antibody to SPDEF

## Preparation

Antigen: Recombinant fusion protein containing a sequence corresponding to amino acids 1-335 of human SPDEF (NP\_036523.1).

## Formulation

PBS with 0.02% sodium azide, 50% glycerol, pH7.3.

## Storage

Store at -20°C. Avoid freeze / thaw cycles.

## Clonality

Polyclonal

## Ig Type

Rabbit IgG

## Applications

WB, IHC, IF

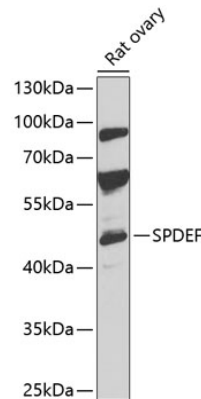
## Dilutions

WB 1:500 - 1:1000

IHC 1:50 - 1:200

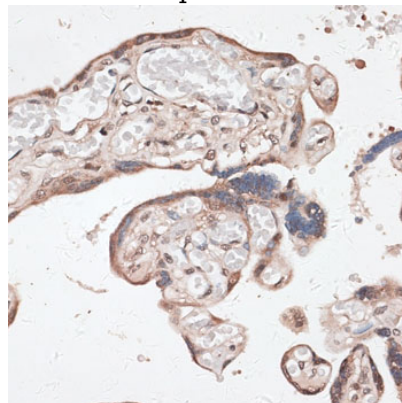
IF 1:50 - 1:100

## Validations



## Western blot - SPDEF Polyclonal Antibody

Western blot analysis of extracts of rat ovary, using SPDEF antibody at 1:1000 dilution. Secondary antibody: HRP Goat Anti-Rabbit IgG (H+L) at 1:10000 dilution. Lysates/proteins: 25ug per lane. Blocking buffer: 3% nonfat dry milk in TBST. Detection: ECL Basic Kit. Exposure time: 30s.



## Immunohistochemistry - SPDEF Polyclonal Antibody

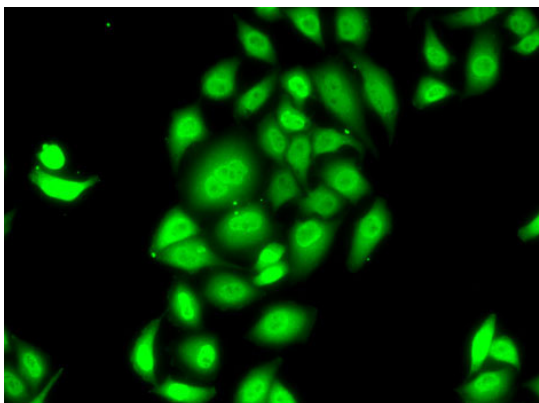
Immunohistochemistry of paraffin-embedded human placenta using SPDEF antibody at dilution of 1:100 (40x lens).

# SPDEF Polyclonal Antibody



Catalog Number: 161931

---



Immunofluorescence - SPDEF Polyclonal Antibody

Immunofluorescence analysis of MCF7 cells using SPDEF antibody .