

Anti-BMP-4/BMP-2B antibody



Catalog Number: 100931

Product name

Anti-BMP-4/BMP-2B antibody

Specificity

Human BMP-4

Antibody description

Mouse monoclonal to BMP-4/BMP-2B

Preparation

This antibody was produced from a hybridoma resulting from the fusion of a mouse myeloma with B cells obtained from a mouse immunized with purified, recombinant Human BMP-4. The IgG fraction of the cell culture supernatant was purified by Protein A affinity chromatography.

Formulation

0.2 μ m filtered solution in PBS with 5% trehalose

Storage

This antibody can be stored at 2°C-8°C for one month without detectable loss of activity. Antibody products are stable for twelve months from date of receipt when stored at -20°C to -80°C.

Preservative-Free.

Sodium azide is recommended to avoid contamination (final concentration 0.05%-0.1%). It is toxic to cells and should be disposed of properly. Avoid repeated freeze-thaw cycles.

Clonality

Monoclonal

Ig Type

Mouse IgM

Applications

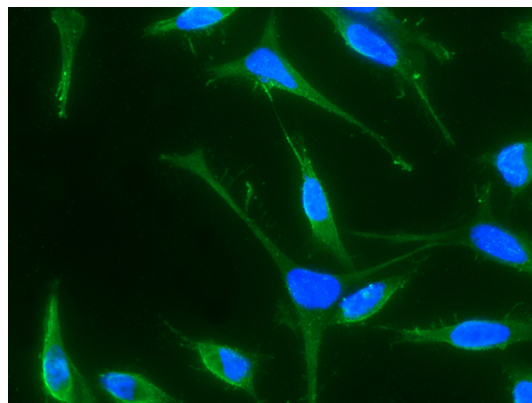
FCM, IF, ICC/IF

Dilutions

FCM: 0.5-2 μ g/Test

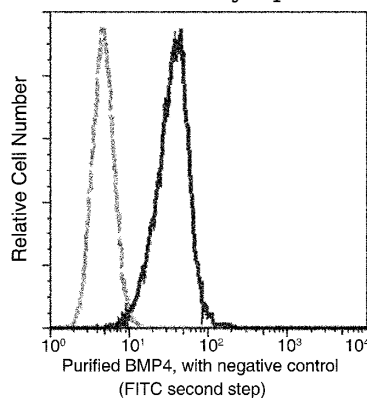
ICC/IF: 10-25 μ g/mL

Validations



BMP-4 Antibody, Mouse MAb, Immunofluorescence

Immunofluorescence staining of Human BMP4 in HeLa cells. Cells were fixed with 4% PFA, permeabilized with 1% Triton X-100 in PBS, blocked with 10% serum, and incubated with Mouse anti-Human BMP4 monoclonal antibody (15 μ g/ml) at 37°C 1 hour. Then cells were stained with the Alexa Fluor® 488-conjugated Goat Anti-mouse IgG secondary antibody (green) and counterstained with DAPI (blue). Positive staining was localized to cytoplasm.



BMP-4 Antibody, Mouse MAb, Flow cytometric analysis

Flow cytometric analysis of Human BMP4 on HeLa

Anti-BMP-4/BMP-2B antibody



Catalog Number: 100931

cells. Cells were treated according to manufacturer's manual (BD Pharmingen™ Cat. No. 554714), stained with purified anti-Human BMP4, then a FITC-conjugated second step

antibody. The histogram were derived from gated events with the forward and side light-scatter characteristics of intact cells.