

SEMA7A Polyclonal Antibody



Catalog Number: 160931

Product name

SEMA7A Polyclonal Antibody

Specificity

Human

Antibody description

Polyclonal antibody to SEMA7A

Preparation

Antigen: Recombinant fusion protein containing a sequence corresponding to amino acids 45-280 of human SEMA7A (NP_003603.1).

Formulation

PBS with 0.02% sodium azide, 50% glycerol, pH7.3.

Storage

Store at -20°C. Avoid freeze / thaw cycles.

Clonality

Polyclonal

Ig Type

Rabbit IgG

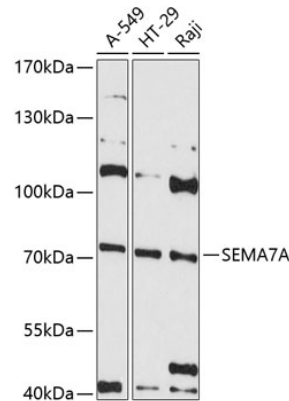
Applications

WB

Dilutions

WB 1:500 - 1:1000

Validations



Western blot - SEMA7A Polyclonal Antibody

Western blot analysis of extracts of various cell lines, using SEMA7A antibody at 1:3000 dilution. Secondary antibody: HRP Goat Anti-Rabbit IgG (H+L) at 1:10000 dilution. Lysates/proteins: 25ug per lane. Blocking buffer: 3% nonfat dry milk in TBST. Detection: ECL Basic Kit. Exposure time: 90s.