

SIGMAR1 Polyclonal Antibody



Catalog Number: 164531

Product name

SIGMAR1 Polyclonal Antibody

Specificity

Human, Mouse, Rat

Antibody description

Polyclonal antibody to SIGMAR1

Preparation

Antigen: Recombinant protein of human SIGMAR1

Formulation

PBS with 0.02% sodium azide, 50% glycerol, pH7.3.

Storage

Store at -20°C. Avoid freeze / thaw cycles.

Clonality

Polyclonal

Ig Type

Rabbit IgG

Applications

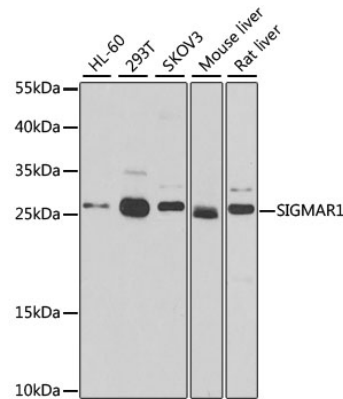
WB, IHC

Dilutions

WB 1:500 - 1:2000

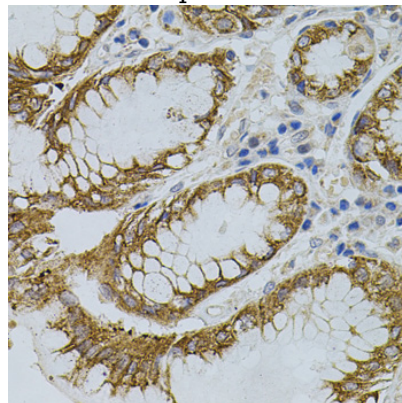
IHC 1:100 - 1:200

Validations



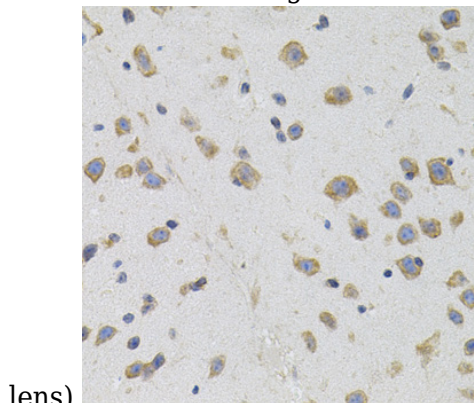
Western blot - SIGMAR1 Polyclonal Antibody

Western blot analysis of extracts of various cell lines, using SIGMAR1 antibody at 1:500 dilution. Secondary antibody: HRP Goat Anti-Rabbit IgG (H+L) at 1:10000 dilution. Lysates/proteins: 25ug per lane. Blocking buffer: 3% nonfat dry milk in TBST. Detection: ECL Basic Kit. Exposure time: 90s.



Immunohistochemistry - SIGMAR1 Polyclonal Antibody

Immunohistochemistry of paraffin-embedded human stomach using SIGMAR1 antibody (40x



lens).

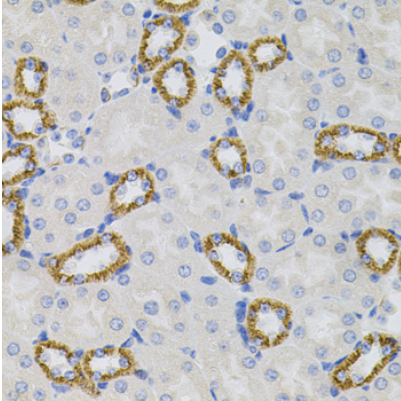
SIGMAR1 Polyclonal Antibody



Catalog Number: 164531

Immunohistochemistry - SIGMAR1 Polyclonal Antibody

Immunohistochemistry of paraffin-embedded mouse brain using SIGMAR1 antibody (40x lens).



Immunohistochemistry - SIGMAR1 Polyclonal Antibody

Immunohistochemistry of paraffin-embedded mouse kidney using SIGMAR1 antibody (40x lens).