

# Anti-SMC1 (8E6) Mouse antibody



Catalog Number: 168131

## Product name

Anti-SMC1 (8E6) Mouse antibody

## Specificity

Human

## Antibody description

SMC1 (8E6) Mouse monoclonal antibody

## Preparation

Antigen: Purified recombinant human SMC1A(N-terminus) protein fragments expressed in E.coli.

## Formulation

Purified mouse monoclonal in buffer containing 0.1M Tris-Glycine (pH 7.4 150 mM NaCl) with 0.02% sodium azide 50% glycerol

## Storage

Store at 4°C short term. Store at -20°C long term. Avoid freeze / thaw cycle.

## Clonality

Monoclonal

## Ig Type

Mouse IgG1

## Applications

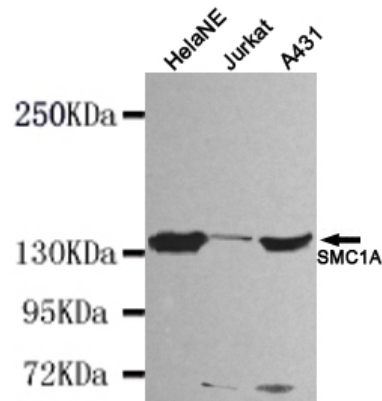
WB, IHC-P, FC

## Dilutions

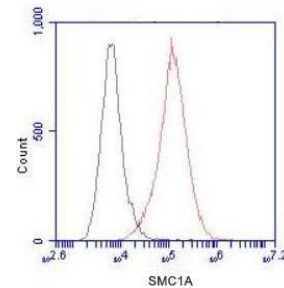
WB: 1/1000

;FC: 1/100

## Validations

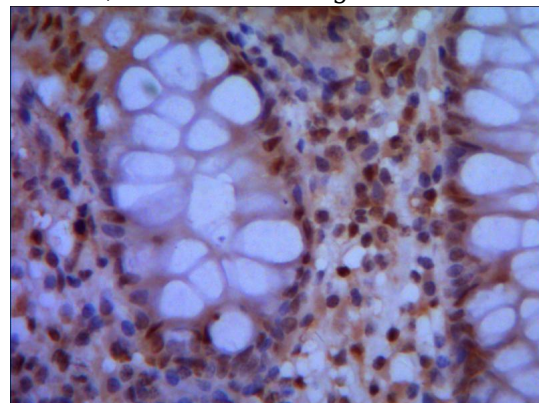


Western blot detection of SMC1A(N-terminus) in HeLaNE, Jurkat and A431 cell lysates using SMC1A (N-terminus) mouse mAb (1:1000 diluted). Predicted band size: 143KDa. Observed



band size: 143KDa.

Flow Cytometry analysis of HeLa cells stained with SMC1A (N-terminus) (red, 1/100 dilution), followed by FITC-conjugated goat anti-mouse IgG. Black line histogram represents the isotype control, normal mouse IgG.



IHC of paraffin-embedded human colon using anti-SMC1A (N-terminus) mouse mAb diluted 1/500-1/1000.