

# Anti-SOD2 Rabbit antibody

Catalog Number: 167131

## Product name

Anti-SOD2 Rabbit antibody

## Specificity

Human, Mouse, Rat, Monkey

## Antibody description

SOD2 Rabbit polyclonal antibody

## Preparation

Antigen: Synthetic peptide.

## Formulation

Purified Rabbit polyclonal antibody in PBS(pH 7.4) containing with 0.03% Proclin300 and 50% glycerol.

## Storage

Store at 4°C short term. Store at -20°C long term.  
Avoid freeze / thaw cycle.

## Clonality

Polyclonal

## Ig Type

Rabbit IgG

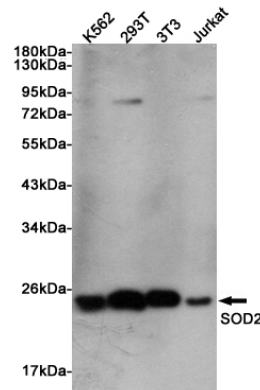
## Applications

WB

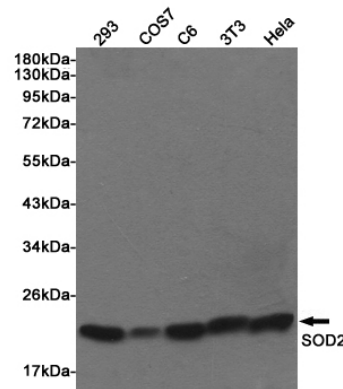
## Dilutions

WB: 1/1000

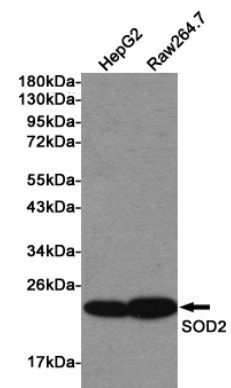
## Validations



Western blot detection of SOD2 in K562, 293T, 3T3 and Jurkat lysates using SOD2 Rabbit pAb (1:1000 diluted). Predicted band size: 25KDa. Observed band size:22KDa.



Western blot detection of SOD2 in 293, COS7, C6, 3T3 and HeLa lysates using SOD2 Rabbit pAb (1:1000 diluted). Predicted band size: 25KDa.



Observed band size:22KDa.

Western blot detection of SOD2 in HepG2 and Raw264.7 lysates using SOD2 Rabbit pAb (1:1000 diluted). Predicted band size: 25KDa. Observed band size:22KDa.