

Human IGF1R/CD221 (His Tag) recombinant protein



Catalog Number: 503131

General Information

Gene Name Synonym

Insulin-like growth factor I receptor; Insulin-like growth factor 1 receptor alpha chain; Insulin-like growth factor 1 receptor beta chain

Protein Construction

A DNA sequence encoding the extracellular domain (Met 1-Asn 932) of human IGF1 Receptor (NP_000866.1) precursor was expressed with a C-terminal polyhistidine tag.

Organism

Human

Expression Host

Human Cells

QC Testing

Activity

Measured by its ability to bind biotinylated human IGF1 in a functional ELISA.

Purity

> 90 % as determined by SDS-PAGE

Endotoxin

< 1.0 EU per μg of the protein as determined by the LAL method

Stability

Samples are stable for up to twelve months from date of receipt at -70°C

Predicted N terminal

Glu 31

Molecular Mass

The calculated molecular masses for α subunit, β subunit and the single chain of the receptor are approximately 81 kDa, 23 kDa and 104 kDa, respectively. As a result of glycosylation, the recombinant single chain, α subunit and β subunit have apparent molecular masses of approximately 150 kDa, 120 kDa and 48 kDa, respectively in SDS-PAGE under reducing conditions.

Formulation

- Lyophilized from sterile PBS Buffer, pH 7.4
1. 5 % trehalose and mannitol are added as protectants before lyophilization.
 2. Please contact us for any concerns or special requirements.

Usage Guide

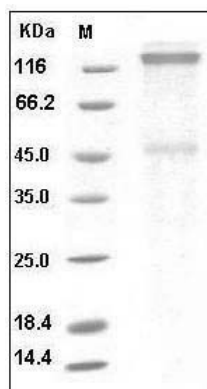
Storage

Store it under sterile conditions at -20°C to -80°C . It is recommended that the protein be aliquoted for optimal storage. Avoid repeated freeze-thaw cycles.

Reconstitution

Adding sterile water, prepare a stock solution of 0.25 mg/ml. Concentration is measured by UV-Vis.

SDS-PAGE



Human IGF1R / CD221 Protein (His Tag) SDS-PAGE