

Endothelin 1 Polyclonal Antibody



Catalog Number: 160131

Product name

Endothelin 1 Polyclonal Antibody

Specificity

Human, Mouse, Rat

Antibody description

Polyclonal antibody to Endothelin 1

Preparation

Antigen: Recombinant fusion protein containing a sequence corresponding to amino acids 18-212 of human Endothelin 1 (NP_001946.3).

Formulation

PBS with 0.02% sodium azide, 50% glycerol, pH7.3.

Storage

Store at -20°C. Avoid freeze / thaw cycles.

Clonality

Polyclonal

Ig Type

Rabbit IgG

Applications

WB, IHC, IF

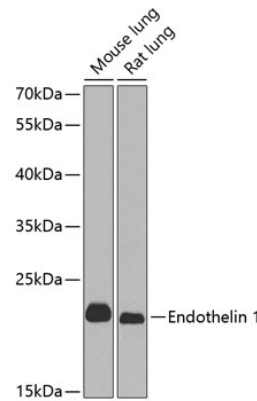
Dilutions

WB 1:500 - 1:2000

IHC 1:50 - 1:100

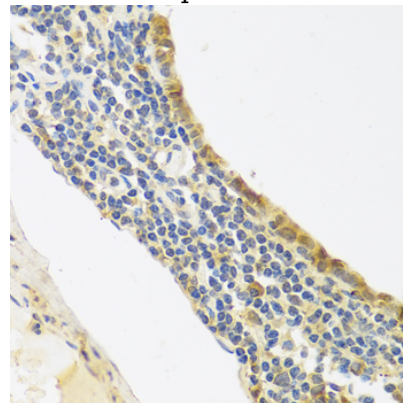
IF 1:50 - 1:100

Validations



Western blot - Endothelin 1 Polyclonal Antibody

Western blot analysis of extracts of various cell lines, using Endothelin 1 antibody at 1:1000 dilution. Secondary antibody: HRP Goat Anti-Rabbit IgG (H+L) at 1:10000 dilution. Lysates/proteins: 25ug per lane. Blocking buffer: 3% nonfat dry milk in TBST. Detection: ECL Basic Kit. Exposure time: 30s.



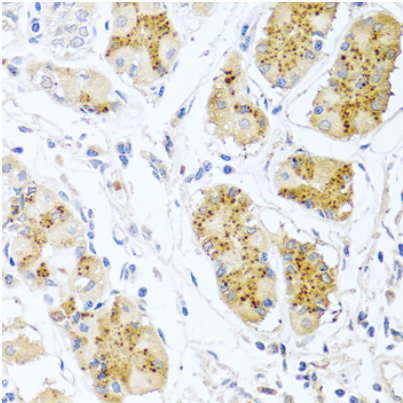
Immunohistochemistry - Endothelin 1 Polyclonal Antibody

Immunohistochemistry of paraffin-embedded human lung cancer using Endothelin 1 antibody at dilution of 1:100 (40x lens).

Endothelin 1 Polyclonal Antibody

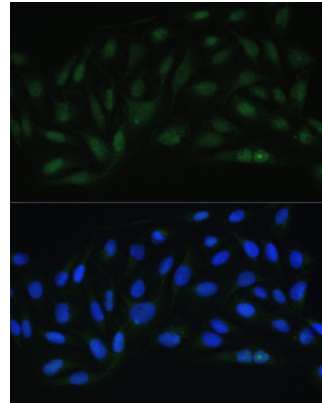


Catalog Number: 160131



Immunohistochemistry - Endothelin 1 Polyclonal Antibody

Immunohistochemistry of paraffin-embedded human stomach using Endothelin 1 antibody at dilution of 1:100 (40x lens).



Immunofluorescence - Endothelin 1 Polyclonal Antibody

Immunofluorescence analysis of U-2 OS cells using Endothelin 1 antibody at dilution of 1:100. Blue: DAPI for nuclear staining.