

Anti-SNAP25 Rabbit antibody



Catalog Number: 168831

Product name

Anti-SNAP25 Rabbit antibody

Specificity

Human, Mouse, Rat

Antibody description

SNAP25 Rabbit monoclonal antibody

Preparation

Antigen: A synthetic peptide of human SNAP25

Formulation

Supplied in 50nM Tris-Glycine(pH 7.4), 0.15M NaCl, 40%Glycerol, 0.01% sodium azide and 0.05% BSA.

Storage

Store at 4°C short term. Aliquot and store at -20°C long term. Avoid freeze / thaw cycle.

Clonality

Monoclonal

Ig Type

Rabbit IgG

Applications

WB, IHC-P, ICC/IF

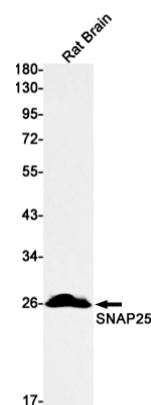
Dilutions

1:1000

1:50

1:50

Validations



Western blot detection of SNAP25 in Rat Brain lysates using SNAP25 Rabbit mAb(1:1000 diluted).Predicted band size:23kDa.Observed band size:25kDa.