

WISP1 antibody

Catalog Number: 116831

Product name

WISP1 antibody

WB: 1:200-1:2000

IP: 1:200-1:2000

Specificity

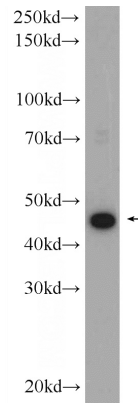
Human, Mouse, Rat; other species not tested.

IHC: 1:20-1:200

Antibody description

WISP1 Rabbit Polyclonal antibody. Positive IHC detected in human heart tissue, human kidney tissue, human small intestine tissue, mouse heart tissue. Positive WB detected in rat kidney tissue, mouse liver tissue, rat lung tissue. Positive IP detected in mouse kidney tissue. Observed molecular weight by Western-blot: 40-46 kDa

Validations



Preparation

This antibody was obtained by immunization of WISP1 recombinant protein (Accession Number: NM_003882). Purification method: Antigen affinity purified.

rat kidney tissue were subjected to SDS PAGE followed by western blot with Catalog No:116831(WISP1 Antibody) at dilution of 1:600

Formulation

PBS with 0.1% sodium azide and 50% glycerol pH 7.3.

Storage

Store at -20°C. DO NOT ALIQUOT

Clonality

Polyclonal

Ig Type

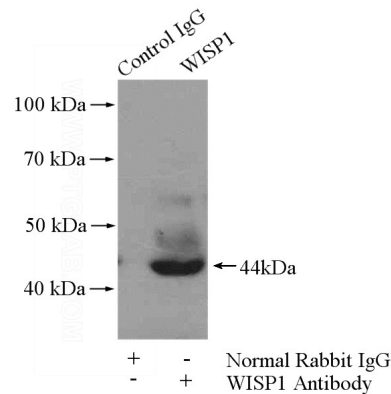
Rabbit IgG

Applications

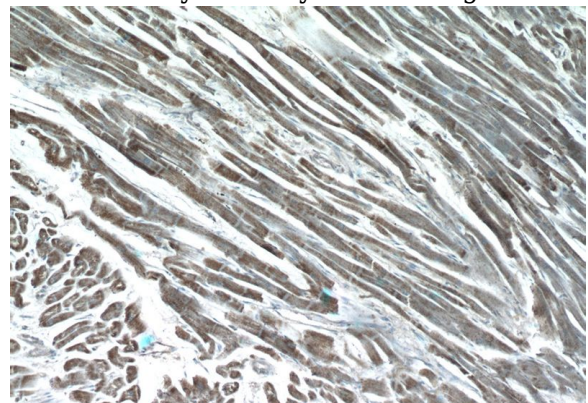
ELISA, IHC, IP, WB

Dilutions

Recommended Dilution:



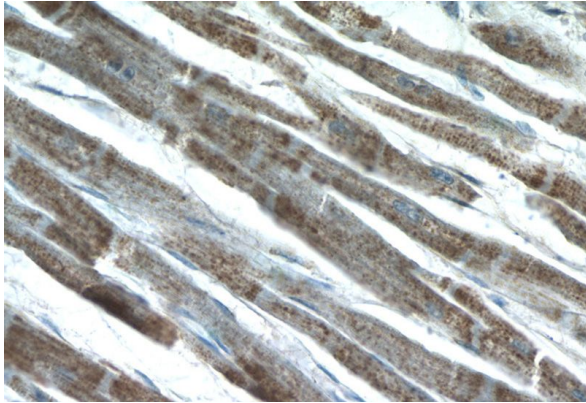
IP Result of anti-WISP1 (IP:Catalog No:116831, 4ug; Detection:Catalog No:116831 1:500) with mouse kidney tissue lysate 7200ug.



WISP1 antibody

Catalog Number: 116831

Immunohistochemistry of paraffin-embedded human heart tissue slide using Catalog No:116831(WISP1 Antibody) at dilution of 1:50 (under 10x lens)



Immunohistochemistry of paraffin-embedded human heart tissue slide using Catalog No:116831(WISP1 Antibody) at dilution of 1:50 (under 40x lens)