

Galc antibody

Catalog Number: 110831

Product name

Galc antibody

Specificity

human, mouse, rat; other species not tested.

Antibody description

Galc Rabbit Polyclonal antibody. Positive IHC detected in human prostate cancer. Positive WB detected in A375 cells, human brain tissue, human placenta tissue. Observed molecular weight by Western-blot: 50-55kd

Preparation

This antibody was obtained by immunization of Galc recombinant protein (Accession Number: BC086671). Purification method: Antigen affinity purified.

Formulation

PBS with 0.1% sodium azide and 50% glycerol pH 7.3.

Storage

Store at -20°C. DO NOT ALIQUOT

Clonality

Polyclonal

Ig Type

Rabbit IgG

Applications

ELISA, WB, IHC

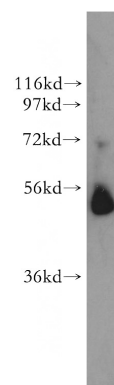
Dilutions

Recommended Dilution:

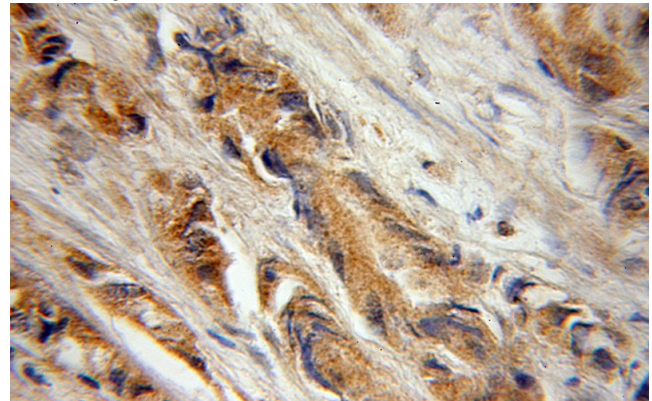
WB: 1:200-1:2000

IHC: 1:20-1:200

Validations



A375 cells were subjected to SDS PAGE followed by western blot with Catalog No:110831(Galc antibody) at dilution of 1:300



Immunohistochemical of paraffin-embedded human prostate cancer using Catalog No:110831(Galc antibody) at dilution of 1:50 (under 10x lens)