

# BCL9 antibody

Catalog Number: 108431

## Product name

BCL9 antibody

IHC: 1:20-1:200

IF: 1:20-1:200

## Specificity

Human; other species not tested.

## Antibody description

BCL9 Rabbit Polyclonal antibody. Positive WB detected in Jurkat cells, Transfected HEK-293 cells. Positive IHC detected in human liver cancer tissue, human colon cancer tissue. Positive IF detected in HeLa cells. Observed molecular weight by Western-blot: 149 kDa

## Preparation

This antibody was obtained by immunization of BCL9 recombinant protein (Accession Number: NM\_004326). Purification method: Antigen Affinity purified.

## Formulation

PBS with 0.02% sodium azide and 50% glycerol pH 7.3.

## Storage

Store at -20°C. DO NOT ALIQUOT

## Clonality

Polyclonal

## Ig Type

Rabbit IgG

## Applications

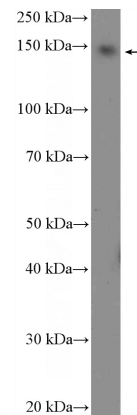
ELISA, IHC, WB, IF

## Dilutions

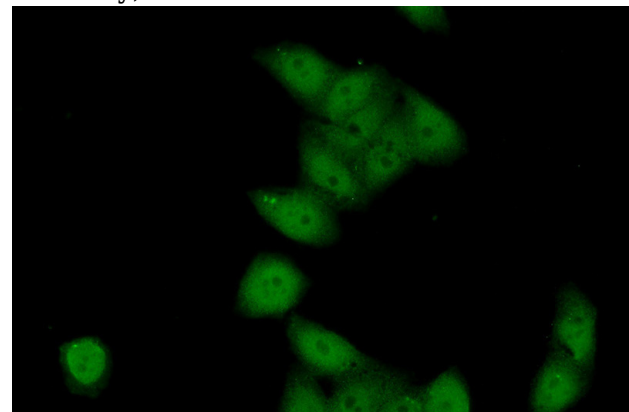
Recommended Dilution:

WB: 1:200-1:2000

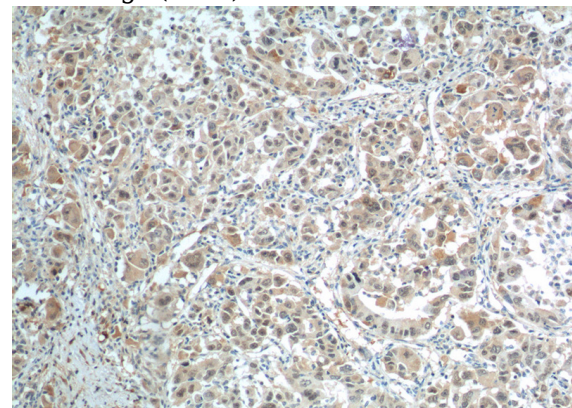
## Validations



Jurkat cells were subjected to SDS PAGE followed by western blot with Catalog No:117104(BCL9 Antibody) at dilution of 1:600



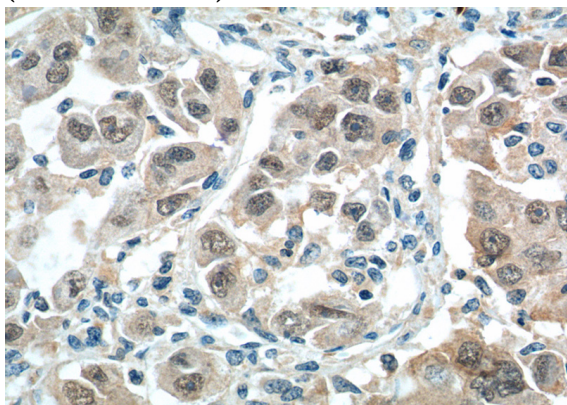
Immunofluorescent analysis of (10% Formaldehyde) fixed HeLa cells using Catalog No:117104(BCL9 Antibody) at dilution of 1:50 and Alexa Fluor 488-conjugated AffiniPure Goat Anti-Rabbit IgG(H+L)



# BCL9 antibody

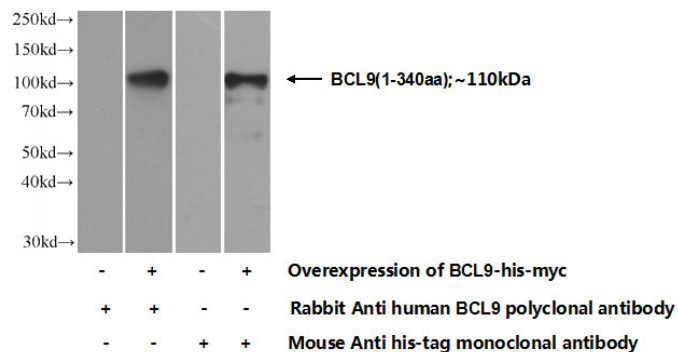
Catalog Number: 108431

Immunohistochemistry of paraffin-embedded human liver cancer tissue slide using Catalog No:117104(BCL9 Antibody) at dilution of 1:200 (under 10x lens).



Immunohistochemistry of paraffin-embedded

human liver cancer tissue slide using Catalog No:117104(BCL9 Antibody) at dilution of 1:200 (under 40x lens).



Transfected HEK-293 cells were subjected to SDS PAGE followed by western blot with Catalog No:117104(BCL9 Antibody) at dilution of 1:1000