

# Anti-Phospho-GSK3 beta (Ser9) Rabbit antibody



Catalog Number: 167431

## Product name

Anti-Phospho-GSK3 beta (Ser9) Rabbit antibody

ICC/IF: 1/50-1/200

## Specificity

Human

## Antibody description

Phospho-GSK3 beta (Ser9) Rabbit polyclonal antibody

## Preparation

Antigen: A synthesized peptide derived from human Phospho-GSK3 beta (Ser9)

## Formulation

Rabbit IgG in phosphate buffered saline , pH 7.4, 150mM NaCl, 0.02% sodium azide and 50% glycerol.

## Storage

Store at 4°C short term. Store at -20°C long term. Avoid freeze / thaw cycle.

## Clonality

Polyclonal

## Ig Type

Rabbit IgG

## Applications

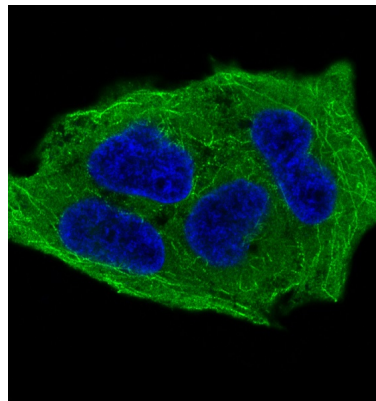
WB, IHC-P, ICC/IF

## Dilutions

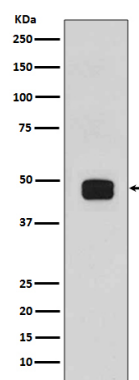
WB: 1/5000-1/10000

IHC: 1/50-1/200

## Validations

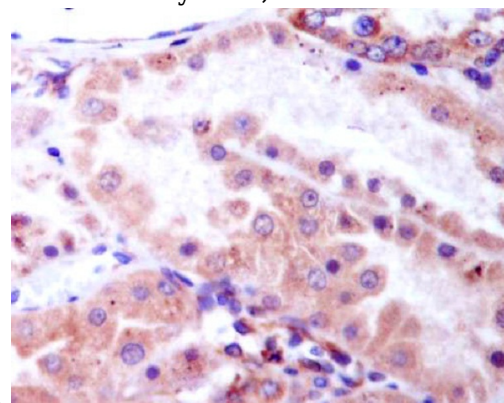


Immunofluorescent analysis of HeLa cells treated with Calyculin A, using Phospho-GSK3 beta (Ser9)



Antibody.

Western blot analysis of GSK3 beta (phospho S9) expression in 293T cell lysates, treated with



Calyculin A.

Immunohistochemical analysis of paraffin-embedded human kidney, using Phospho-GSK3 beta (Ser9) Antibody.