

Phospho-MARCKS-S162 pAb



Catalog Number: 166431

Product name

Phospho-MARCKS-S162 pAb

Specificity

Human, Mouse, Rat

Antibody description

Polyclonal antibody to Phospho-MARCKS-S162

Preparation

Antigen: A phospho specific peptide corresponding to residues surrounding S162 of human MARCKS

Formulation

PBS with 0.02% sodium azide, 50% glycerol, pH7.3.

Storage

Store at -20°C. Avoid freeze / thaw cycles.

Clonality

Polyclonal

Ig Type

Rabbit IgG

Applications

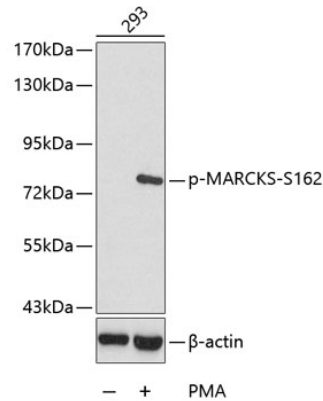
WB, IF

Dilutions

WB 1:500 - 1:2000

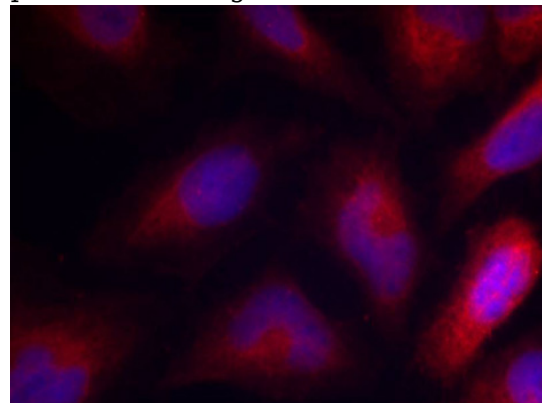
IF 1:100 - 1:200

Validations



Western blot - Phospho-MARCKS-S162 pAb

Western blot analysis of extracts from 293 cells, using Phospho-MARCKS-S162 antibody. Secondary antibody: HRP Goat Anti-Rabbit IgG (H+L) at 1:10000 dilution. Lysates/proteins: 25ug per lane. Blocking buffer: 3% BSA.



Immunofluorescence - Phospho-MARCKS-S162 pAb

Immunofluorescence analysis of methanol-fixed HeLa cells using Phospho-MARCKS-S162 antibody.