

SMARCB1 antibody



Catalog Number: 115431

Product name

SMARCB1 antibody

IP: 1:200-1:2000

IHC: 1:20-1:200

Specificity

Human, Mouse, Rat; other species not tested.

Antibody description

SMARCB1 Rabbit Polyclonal antibody. Positive WB detected in HepG2 cells, K-562 cells. Positive IP detected in K-562 cells. Positive IHC detected in human lymphoma tissue, human prostate cancer tissue. Observed molecular weight by Western-blot: 40-44 kDa

Preparation

This antibody was obtained by immunization of Peptide (Accession Number: NM_003073). Purification method: Antigen affinity purified.

Formulation

PBS with 0.02% sodium azide and 50% glycerol pH 7.3.

Storage

Store at -20°C. DO NOT ALIQUOT

Clonality

Polyclonal

Ig Type

Rabbit IgG

Applications

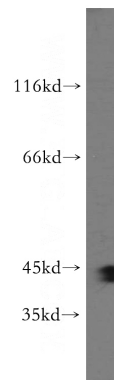
ELISA, WB, IP, IHC

Dilutions

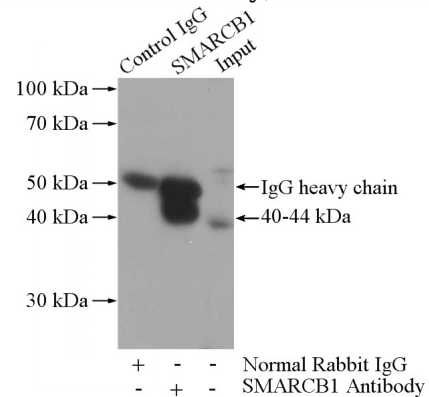
Recommended Dilution:

WB: 1:500-1:5000

Validations

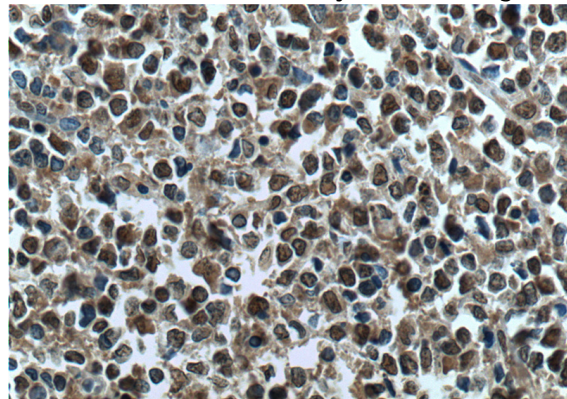


HepG2 cells were subjected to SDS PAGE followed by western blot with Catalog No:115431(SMARCB1 antibody) at dilution of



1:500

IP Result of anti-SMARCB1 (IP:Catalog No:115431, 4ug; Detection:Catalog No:115431 1:500) with K-562 cells lysate 3200ug.



Immunohistochemistry of paraffin-embedded

SMARCB1 antibody



Catalog Number: 115431

human lymphoma tissue slide using Catalog
No:115431(SMARCB1 Antibody) at dilution of

1:200 (under 40x lens). heat mediated antigen
retrieved with Tris-EDTA buffer(pH9).