

# OSBPL2 antibody



Catalog Number: 113431

---

## Product name

OSBPL2 antibody

## Specificity

human, mouse, rat; other species not tested.

## Antibody description

OSBPL2 Rabbit Polyclonal antibody. Positive WB detected in HeLa cells, mouse brain tissue. Observed molecular weight by Western-blot: 55kd

## Preparation

This antibody was obtained by immunization of OSBPL2 recombinant protein (Accession Number: XM\_017028165). Purification method: Antigen affinity purified.

## Formulation

PBS with 0.02% sodium azide and 50% glycerol pH 7.3.

## Storage

Store at -20°C. DO NOT ALIQUOT

## Clonality

Polyclonal

## Ig Type

Rabbit IgG

## Applications

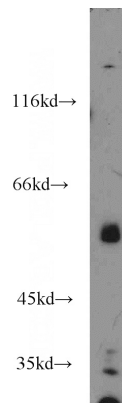
ELISA, WB

## Dilutions

Recommended Dilution:

WB: 1:200-1:2000

## Validations



HeLa cells were subjected to SDS PAGE followed by western blot with Catalog No:113431(OSBPL2 antibody) at dilution of 1:1000